



**UNIVERSITY OF PORT HARCOURT, PORT
HARCOURT, NIGERIA**



**AFRICA CENTRE OF EXCELLENCE
FOR PUBLIC HEALTH AND
TOXICOLOGICAL RESEARCH (PUTOR)**



CENTRE'S HANDBOOK

APRIL 2019

Preface

The purpose of this handbook is to provide general information for the guidance of PhD students who may wish to undertake training and research at the World Bank African Centre of Excellence for Public health and Toxicological Research (ACE-PUTOR), University of Port Harcourt. The Handbook and the contents are subject to change from time to time.

The Centre's Academic Board reserves the right to modify or cancel any statement in the brochure and accepts no responsibility for any consequence(s) arising from this

Table of Contents

Preface.....	
UniPort's Anthem	
Welcome from the Centre Leader	
Introduction.....	
About PUTOR	
Vision.....	
Mission.....	
Rationale	
Specific objectives	
PUTOR advantage	
Methodology	
Education, teaching and learning.....	
Description of graduate training programmes	
Postgraduate programme in environmental health	
Postgraduate programme in nutritional biochemistry/ toxicology	
Postgraduate Programmes in Environmental Toxicology	
Admission Requirements	
Programme Titles.....	
Available options	
Full Time Admission	
Part Time Admission	
Graduation Requirements	
Doctoral Continuation Report and Viva	
Doctoral Dissertation	
Credits for doctoral programme.....	
List of courses, code and credit units.....	
Courses description.....	
PUT 901- Entrepreneurship (3 units).....	
PUT 903 – ICT, Technical Writing & Presentation Skills (3 units)	
PUT 904: Environmental Epidemiology, Exposure Science & Risk Assessment	

PUT 906 – Research Methods (3 units).....	
PUT 909 - Advanced Nutritional Biochemistry (3 Units).....	
PUT 912 - Analytical Methods in Environmental Health (3 Units).....	
PUT 905 - Seminar (3 Units).....	
PUT 907 – Research Project (12 Units).....	
Centre Registration	
Academic Regulations	
General objectives of courses	
Academic session.....	
Modular training system	
Definition of credit unit	
Timetable	
Training Methods.....	
Attendance and Participation	
Logbook and attendance.	
Regulations during lectures and visits	
Dissertation	
Seminar	
Instructions for the seminar	
Seminar scoring	
Examinations.....	
Grading during course.....	
Grading during final examination.....	
Pass mark	
Grading system	
Computation of Grade Point Average.....	
Examination resit policy	
Other regulations of examination.....	
Code of conduct during Examination	
Overstay	
Completion of programme.....	
Temporal withdrawal from study.....	
Regulations, Procedures and other elements of the Programme.....	

Submission of course work/assignment and presentations of seminars	
Assessment planning procedures	
Results of examination.....	
Plagiarism and malpractice	
Examination Malpractices	
Abuse and sexual harassment	
Research governance	
Students' engagements during training.....	
Research Groups	
Scholarships	
Financial Support	
Disability support.....	
Student retention and progress monitoring	
Accommodation	
Fee payment	
Deferment of Admission.....	
Community service	
Library.....	
Library Resources	
Miscellaneous information.....	
Course Members' Representative	
Absence.....	
Illness	
Student Advisor	
Guidance and Counselling	
Mentoring.....	
Research.....	
Annual Academic Progress Report	
Centre and Programme Administration	
The Centre Management Committee	
The Centre Academic Board.....	
Partners and internship locations	
Academic staff associated with the centre	

Forms	
Students' evaluation.....	
Module evaluation	
System evaluation	
Feedback on field attachment	
Absence form.....	
Profiles of Centre's Administrators.....	

UniPort's Anthem



THE UNIVERSITY ANTHEM

On the green lowlands and swampy planes
Of the new Calabar Rivers stand
The University of Port Harcourt
A citadel of learning and excellent education
A home of academic enthusiasts,
Searching, searching for knowledge and wisdom.

Enlightenment and self-reliance, our mission,
Our hope in the future is rooted in God alone;
The vision of our father shining in the stars,
Opportunities, unlimited and equal,
Our progenies citizens of the universe
From far and near, the pride of Uniport echoes.

Refrain:

Unique, Unique, Unique Uniport
Unique, Unique, Unique Uniport

Welcome from the Centre Leader

Dear Student

Welcome to the Africa Centre of Excellence for Public Health and Toxicological Research in the University of Port Harcourt. This document contains important information about the University of Port Harcourt, PUTOR, your training and other useful information that would help you. Please read through carefully and keep for future reference. If you have any problem, please contact the appropriate member of staff, or any of the coordinators or your adviser.

We will see quite a lot of each other in the forthcoming years as I look forward to working with you, and to several enjoyable social occasions. The staff at the Centre hope you will have a successful and pleasant period during your engagement with the Centre and we welcome this opportunity to contribute to your career development.

Please note that this document would be used in conjunction with other policies and guidelines of the University of Port Harcourt. This Manual is without prejudice to the existing relevant rules, regulations and conducts at the level of the University of Port Harcourt. Where there are conflicts, the position of the University of Port Harcourt will most likely supersede that of the Centre of Excellence.

Daprim S. Ogaji

MBBS (UPH), MQI (Helsinki), PhD (Manchester), MNIM, FMCPH, FISQua
Centre Leader

Introduction

The UNIVERSITY OF PORT HARCOURT was established in 1975 as a College of the University of Lagos. The University of Port Harcourt is one of the avant-garde (new, experimental and innovative) tertiary institutions with a mandate to empower the Niger Delta region and the country academically. The University gained full autonomous status in 1977 on the premises of an emergent Trade School outside Choba Community, its temporary site, close to its new permanent site known as the University Park.

“Unique UniPort,” as the institution is popularly known by its many graduates and stakeholders is recognised by the National Universities Commission (NUC) as a campus status with growing academic, residential, social and cultural facilities to support a growing community of Scholars and administrators.

A five-star teaching hospital, which serves as a “laboratory” for the University's top-rated College of Health Sciences, caters to the health needs of a large populace drawn from the South-South and South-East regions of the country.

The university which offers the best in conventional liberal, equal-opportunity education in the arts, engineering, social sciences and science, is located about 18 kilometres, Northwest of the central business district of the bustling Garden City of Port Harcourt, home to Nigeria's second largest seaport and the hub of the lucrative petroleum and gas industry.

The University is uniquely located in-between the southern-most part of the West African tropical rain forest, and the northern fringes of wetlands, swamps, rivers and mangrove

forests that make the Niger Delta a special tourist attraction. The university is surrounded by rural agrarian and artisanal communities that have been positively impacted by its presence in the area. UNIPOINT also runs effective extension services through its specialised research institutes and centres that have encouraged economic growth and social life in its catchment areas and beyond.

The University has been lucky to have very visionary and dynamic Vice Chancellors since its inception, each of whom took the institution to a higher level of infrastructural and academic development.

Unique UniPort welcomes students and visitors to the bustling city of Port Harcourt, the capital of Nigeria's hydrocarbon industry and, indeed, the Niger Delta region.

WELCOME TO PORT HARCOURT (THE GARDEN CITY OF NIGERIA)

The University is located about 15 Kilometres northwest of Port Harcourt. Port Harcourt was founded by the British Colonial Government in 1913, following the discovery of coal near Enugu, the defunct regional capital of Eastern Nigeria. There was a felt need for a seaport and railway terminus to evacuate coal and engage in land trade that was growing on the Eastern hinterland. Port Harcourt has since attracted a cosmopolitan population made up of many nationalities that relish its cultural diversity and bustling night life.

The discovery of oil at Oloibiri in 1956 in present-day Bayelsa State in the Niger Delta heartland brought accelerated development to the city of Port Harcourt and its environs, making it one of the largest cities in West Africa (Gulf of Guinea).

The city is also famous for glass, tyre, brewing, petro-chemicals and liquefied natural gas. Most of the multi-national oil drilling and servicing companies have their offices in Port Harcourt.

The city is a gateway to the riverine areas of the Niger Delta, and provides ample opportunities for studies in marine biology, eco-tourism and the life sciences. Port Harcourt can be reached by road and sea from all parts of Nigeria; with daily flights to and from major cities of Nigeria and the world.

About PUTOR

PUTOR is a World Bank funded African Centre of Excellence for Public Health and Toxicological Research. It is a platform for providing inter-disciplinary academic streams of postgraduate programmes, in order to rapidly bridge the gap arising from current paucity of adequately trained personnel with terminal degrees in public health, toxicology, nutrition and midwifery/child health nursing in sub-Saharan Africa.

Health systems played a key role in the dramatic rise in global life expectancy during the 20th century, and still contributes enormously to the improvement in population health. A multi-disciplinary health workforce is the backbone of each health system that facilitates the smooth implementation of health actions for sustainable socio-economic development.

- The official currency in Nigeria is the Naira. Conversion into other world's currency can be obtained on <https://www.oanda.com/currency/conv/erter/>
- There are numerous ATM machines available throughout the city and within the University
- The electrical voltage in the Nigeria is 220v with a three square -prong socket
- Nigeria is on Greenwich Mean Time (GMT + 1)
- The Port Harcourt average annual temperature is **26.4 °C** in Port Harcourt while precipitation averages 2708 mm weather is

Furthermore, the direct effect of on-going oil and gas activities has left deleterious consequences on the ecosystem and public health in all the countries in this region. The way of life of the people, whose livelihood are dependent on the surrounding ecosystem have adversely affected. More recently, there has been a ‘double air pollution burden’ in the city of Port Harcourt. The persistence of black soot over the city is partly the result of oil exploration, meteorological changes, criminal activities of artisanal crude oil refiners, poor environmental regulatory activities and the dearth of strategic knowledge resource to combat these preventable catastrophes.

Adequately trained and highly skilled health workforce would play a major role in tackling the public health and environmental issues arising from oil exploration and exploitation in the Niger Delta region of Nigeria as well as contiguous areas in the Gulf of Guinea. Environmental degradation, especially the swamps, rivers and creeks from oil spills, pipeline vandalizing and illegal refining activities are the major fallouts of the oil and gas industry in the Niger Delta region. This affects the health and livelihood of the people who depend on the ecosystem services for survival, leading to increased poverty and hunger. The problem is compounded by the paucity of highly skilled and motivated health professionals who are equipped with current knowledge, skills and competencies required for conducting cutting-edge research in public health, toxicology, nutrition and nursing that would help mitigate the public health issues arising from oil and gas exploration in the region.

Vision

Our vision is to become a centre of excellence in providing highly sought-after, world-class academic and professional programmes which are recognised for local relevance, international excellence and global impact in the field of public health, toxicology, nutrition and midwifery/child health nursing.

Mission

Our mission is to provide a platform to congregate highly skilled human resource, both within and outside the University of Port Harcourt; build a robust resource of highly skilled and motivated public health professionals who are equipped with current knowledge, skills and competencies required to improve the practice of public health, nutrition, toxicology and midwifery/child health nursing; produce cutting –edge research projects to solve public health issues arising from oil and gas sectors ; and undertake consultancy and community services.

Rationale

The need for scholars with research and problem-solving skills who have strong interest in collaborative and interdisciplinary research is increasingly becoming glaring with the advent of multifaceted and complex health challenges. The training programmes by the African Centre of Excellence provides scholars with the required knowledge and skills in research to approach and fix these challenges.

Specific objectives

Specific Objectives of the Centre include:

1. Training of students, technical experts, and policymakers through short courses on relevant public health and toxicological issues in the region.
2. Training of national and regional Masters' students in the focused areas
3. Training of national and regional students to obtain PhDs in the focused areas.
4. Development of regional research capacity to support focused interventions on developmental challenges

PUTOR advantage

PUTOR's advantages can be appreciated from its recognition of:

Value: All trainings and programmes in PUTOR have strong value propositions designed to develop high-flying health professionals that are equipped to solve local problems.

Partnership: Besides the strong inter-disciplinary research teams that would generate ground-breaking research in health, PUTOR has broad-based partnership with other players in the health and environmental sectors. Our partners include local and international academic institution and industries who contribute to the curriculum development and training programmes under the Centre.

Social: Appreciated from two major perspectives:

- The positive impact of the alumni from PUTOR collaborating departments.
- The/accountable and transparent academic governance developed for the Centre.

Business: This is premised on the sustainability plans beyond the grants from the World Bank.

Other: include the: strong emphasis on collaboration and interdisciplinary research; strong reputation for excellence; availability of a language laboratory for training non-English students; e-library facility; access to electronic learning resources; unparalleled support for teaching & learning; comfortable learning environment; students support; and the uninterrupted learning calendar.

Methodology

Philosophically, all programmes in PUTOR are designed with the need to promote equity, excellence and integrity. These are premised on developing the knowledge, skills and competences of students from diverse academic backgrounds to becoming industry-ready professionals. A period of internship in the relevant industry/sector is mandatory and newer pedagogical techniques built around blended learning, competency-based learning and self-directed learning. All programmes in the Centre are new and their development was with the involvement of the broad stakeholders and partners. The Centre and the collaborating units in the university will be responsible for programme coordination. We aim to have both local and international accreditations for these programmes and as such, they are tailored to meet specific regional development needs and bear global relevance. All activities of the Centre have strong value propositions that will eventually translate into developing high-flying public health professionals that are equipped to solve local problems. All staff will be trained on the newer pedagogical and applied research methodologies that will be deployed. Faculty members and students will be recruited from the West African region to build regional capacity and enhance collaboration. The key international partners (see appendix) will work with PUTOR and collaborating school/centre/departments to review and develop new curricula, conduct trainings and short courses, support the supervision and mentorship of PhD students, and participate in students/faculty exchange and visits.

Education, teaching and learning

PUTOR programmes provide the students with the latest knowledge to research on various causes of diseases, and the skills for their assessment and abatement. The specific objectives of the programme include:

- To provide training in toxicology and environmental health that would enable the postgraduates identify the risks to health in the environment and abate the identified health hazards in the environment;
- To provide opportunities for advanced study and innovations in basic and applied human nutrition including better understanding of socio-cultural effects on diet, the impact that living in "food deserts" could have on good health, and to educate the women on how to make good food choices from the food items available in the community to ensure adequate nutrition and optimal health for women and children;
- To adapt this training in public health, toxicology, nutritional biochemistry and nursing to the needs of the industry, the diverse backgrounds and anticipated future careers of the students.

Description of graduate training programmes

The Centre had initiated multiple streams of MSc/PhD in core areas within the focus of the Centre, some of which are described below.

Postgraduate programme in environmental health

The environment is changing at a rate that puts the health of the present and future generations of human beings at risk; hence the need for specialists in Environmental Health to help reverse the trend and promote coping capacity. This taught graduate programme in Environmental Health is designed to build the requisite skills and capacity for driving the practice of Environmental Health in Nigeria.

The philosophy of the programme is to promote equity, excellence and integrity. This is premised on developing the knowledge, skills and competences of students from diverse academic backgrounds but with creative minds who are desirous to acquire more skills and experiences that would prepare them for leadership roles in public health.

Rationale for the Graduate Programme in Environmental Health

The rationale for establishing the master's programme in Environmental Health is to rapidly bridge the current and obvious paucity of adequately trained environmental health personnel in public and private health institutions in Rivers State, the Niger Delta region and the country in general. This proposed programme of study is intended to address this gap by training individuals who want to develop their expertise in Environmental Health up to the PhD level.

Aim and objectives of the Graduate Programmes in Environmental Health

The aim of the graduate programmes in Environmental Health is to provide the student with the latest scientific information on the various environmental causes of diseases, and the skills for their assessment and abatement. This helps to equip students with knowledge to

influence healthy public policies as regards environmental health. The specific objectives of the programme include:

- To provide training in public health and Environmental Health that would enable the graduate to identify the risks to health in the environment.
- To provide the training that would empower the graduate to abate the identified health hazards in the environment;
- To adapt this training in public health and Environmental Health to the diverse backgrounds and anticipated future careers of the students;
- To award the degrees to individuals who have acquired a depth of knowledge in public health and Environmental Health.

Intended Learning Outcomes

The intended learning outcomes on successful completion of the various trainings in Public Health are:

- a) Know the concept of public health and Environmental Health and its relevance in Nigeria health care system;
- b) Describe the health hazards in the environment, and the possible diseases they are likely to cause
- c) Carry out studies to identify prevalent environmental health problems in the community and determine the effective means of solving them;
- d) Know how to plan, organize and evaluate appropriate health programmes;
- e) Seek and mobilize resources for health care and programmes;
- f) Exhibit the highest principle of public health ethics in the development of abatement programmes for identified environmental health hazards
- g) Be acquainted with the relevant environmental health policies and laws
- h) Carry out a research project in any area of environmental health
- i) Develop the spirit of teamwork among the members of the health team and engage in on-going policy dialogue on environmental health;

Skills to be acquired

In line with the learning outcomes of the programme, the following skills would be acquired:

Technical Skills

- Detailed technical knowledge of public health and Environmental Health

- Understanding of the applications of this knowledge in solving health problems in the society at large
- Technical, interpersonal and organizational competence in the practice of Environmental Health

Generic Skills

- Acquire skills to become highly effective environmental health practitioner in public and private health institutions
- Ability to work as an environmental health specialist independently and in a team within an organisation
- Presentation skills and experience
- Social skill in dealing successfully with every individual in the workplace as public health practitioner and in the community

Postgraduate programme in nutritional biochemistry/ toxicology

Nutritional Biochemistry/Toxicology is a science of food and its relationship to health and diseases. It also refers to nourishment that sustains life, the study of nutrient requirements and the diet providing these requirements. Nutritional biochemistry/toxicology also covers principles and elements (agent, target, and effect) of toxic events, with a focus on food toxicants and nutrient-toxicant interaction. Therefore, this PhD programme will focus on the metabolic biology of nutrients and toxicants in relation to human health and diseases. Our research and curriculum will span a breadth of topics, from the delivery of nutrients to mammalian cells and their molecular functions, through the influence of genetics on diet-associated human disease, to programs and policies that address human and environmental health and safety.

Rationale for the Graduate Programme in Nutritional Biochemistry/Toxicology

The rationale for the PhD programme in Nutritional Biochemistry/ Toxicology is to prepare graduate students to achieve excellence in academic and private sector research and for professional careers related to nutrition and toxicology. The programme is designed to encourage interdisciplinary research in nutrition and toxicology with a focus on metabolic, physiological and genetic influences on health. Furthermore, we intend to translate knowledge developed through basic research to improve health and integrate such with health-related programmes, including “intervention” research. This will be achieved through curriculum relating nutrition, toxicology and metabolism to the pathophysiology of human health. Our target audience is graduate students majoring in Biochemistry, Nutrition, Food Science, and other relevant programmes. It will comprise mainly of two parts namely: Principles of toxicology: adsorption, distribution, metabolism and excretion (ADME) of xenobiotics; toxicokinetics; system toxicity; organ toxicity and primary research on food and nutritional toxicology: safety assessment on dietary components; case studies on the toxic (or detoxification) events associated with food intake and environmental exposure; in vivo and in vitro techniques for toxicological research.

Aims and Objective of PhD in Nutritional Biochemistry / Toxicology:

After taking this course, the graduate students should be able to:

- understand the basic concepts of toxicology
- understand the molecular mechanism behind the chemical-induced toxicities

- comprehend the impact and risk of dietary chemicals to human health
- Intended Learning outcomes
- Critically review primary research papers in nutritional toxicology field
- learn the principles of research techniques used in the toxicological projects
- form their own opinions on the risk assessments of dietary components
- address and discuss the issues related to the chemical-induced toxicities

Skills to be acquired

These include but not limited to:

Providing high quality postgraduate skills that are required to control the current epidemic of nutrition-related health problems (obesity, cardiovascular disease, Type 2 diabetes, and cancer) in the sub-Saharan region.

Overall, the goal of this course is to provide the students an intellectual platform to comprehend the potential adverse effects of foreign compounds into the biological system.

Postgraduate Programmes in Environmental Toxicology

The entire population and environment at large have been confronted with a lot of health challenges emanating from toxicological impacts of oil and gas industries on the environment. There is an urgent need to evaluate not only the sources, but also the health implications and possibly ways of ameliorating or preventing the health effects of such hazardous chemicals using natural antidotes. The postgraduate programme in Environmental Toxicology is designed to offer intensive training in special areas with emphasis on selected research programmes. It will also promote research on suspected and known environmental toxicants with emphasis on multidisciplinary approaches, provide education and laboratory training at the postgraduate level and facilitates exchange of scientific information relating to molecular and medical Toxicology, environmental and public health issues especially as it relates to the Niger Delta, Nigeria and sub-Saharan Africa.

Lack of equity, excellence and integrity noted in handling some of the effects is compounded by the paucity of highly skilled and motivated health professionals who are equipped with current knowledge, skills and competencies required for conducting cutting-edge research in toxicology that would help mitigate the public health issues arising from oil and gas exploration in Nigeria. This can be achieved by developing high calibre manpower, with the requisite teaching skills and research abilities, to handle the public health and environmental challenges hindering sustainable development in regions of Africa where oil and gas activities are on-going.

Rationale for the Graduate Programme in Environmental Toxicology

The rationale for the graduate programme in Toxicology is to bridge the gap and dearth of adequately trained environmental toxicologist by impacting in students current knowledge, skills and competencies required to improve the practice of toxicology; produce cutting-edge research projects in toxicology to solve toxicological issues arising from oil and gas activities and undertake consultancy and community services to educate the use of natural antidotes to reduce the threat of such environmental toxicants. This proposed programme of study is

intended to address this gap by training individuals who want to develop their expertise in Environmental Toxicology.

Aim and Objectives of the Post Graduate Programmes in Environmental Toxicology

The aim of the post graduate programmes in Environmental Toxicology is to provide the student with the latest scientific information on the various toxic effects of such environmental pollutants (air, soil and water) to both human and other living creatures and the skills for assessment and use of natural antidotes to reverse such effects. The specific objectives include:

- To provide training in both health-related toxicology and environmental toxicants that would enable the graduates to identify the risks to health and environments.
- To provide the training that would empower the graduate to halt the identified health and environmental hazards.
- To adapt this training in environmental toxicology to the diverse backgrounds and anticipated future careers of the students.
- To award the degree to individuals who have acquired a depth of knowledge in toxicology.
- To provide training in the methods of scientific enquiry for candidates interested in and can pursue academic career in research and /or teaching
- To provide graduate students with advanced knowledge and skills needed to meet the ever increasing national and international manpower need in Toxicological training and research.
- To produce thoroughbred professionals with doctorate degree (PhD) via entrepreneurial research, innovative teaching and assessments methods who will play leading roles in bridging the gap and dearth of adequately trained environmental toxicologist in academia, private industries and governments agencies

Intended Learning Outcomes

The intended learning outcomes on successful completion of the various trainings in Environmental Toxicology are:

- a) Know the concept of Environmental Toxicology and its involvement in public health challenge in Nigeria;
- b) Describe the health hazards in the environment as a result of oil and gas, and its possible outcome
- c) Carry out studies to identify prevalent environmental problems emanating from oil and gas pollutants in the community and determine the effective means of solving them;
- d) Disseminating information on the use of natural resources to mitigate some of the problems emanating from oil and gas activities on the general public.
- e) Exhibit the highest principle of public health ethics in the development of abatement programmes for identified environmental health hazards.
- f) Carry out a research project in any area of Environmental Toxicology.
- g) Develop the spirit of teamwork amongst other members of the environmental/toxicology team to ensure common goal in achieving toxic free environments is realized.

Admission Requirements

1. Candidates admitted into any of the PhD programme should have:

- Successfully completed a relevant Masters' degree with a CGPA of not less than 4.0 on 5.0-point scale
 - Presented a statement of purpose which should also contain the proposal for the research he or she is intending to undertake
 - Provide two letters of recommendation, one of which must be from an employer or supervisor and the other from the university where the candidate obtained the master's degree
 - Be found suitable for admission after an interview by the Postgraduate Degree Committee of the Faculty
 - Candidates with master's degrees in food science and technology, food microbiology and other related courses may apply for the PhD in nutritional biochemistry/ toxicology
2. Each candidate for the PhD programme shall be assigned at least 2 supervisors who have researched and published extensively in the candidate's intending area of research. The main supervisor shall take the lead in providing direction for the research
 3. The candidate shall be provided a pathway which shows an interactive timeline of his or her key progression milestone specific to the research programme. Candidates who have an interruption, extension or changed their milestones would need to update their new progression milestone deadlines with the Postgraduate Committee in the department

Programme Titles

- Doctor of Philosophy (PhD) in Environmental health,
- Doctor of Philosophy (PhD) in Environmental toxicology
- Doctor of Philosophy (PhD) in Nutritional Biochemistry/ Toxicology

Available options

Full time – three years (minimum)

Part-time – Five years (minimum)

Full Time Admission

Full-time admission is offered only to candidates who can satisfy PUTOR and the School of Graduate Studies that they are not in any employment, or that they have been relieved by their employers to undertake full-time studies. It covers a minimum period of three years.

Part Time Admission

All part-time candidates can continue to engage in approved employment but shall submit evidence that they can devote a good proportion of their normal working years to their studies and satisfy the PUTOR Graduate Studies Committee that they would be available for attendance at courses and for regular consultations with their supervisors. It covers a minimum period of five years.

Graduation Requirements

To qualify for the award of the PhD, the candidate must have successfully completed all the prescribed courses in the programme, completed a dissertation under supervision, published a

minimum of two (2) journal articles from their work in a reputable journal before their external defense and must have attended a minimum of one (1) scientific conference.

Doctoral Continuation Report and Viva

1. The doctoral candidate shall provide a progress report on training and detailed proposal for the doctoral research at the end of the first year of the doctoral programme which would be assessed at a viva session before at least two internal assessors assigned by the Centre's Management.
2. The continuation report shall contain a summary of the candidate's progress in the taught courses and research protocol including the plan for the remaining period of the programme.
3. The internal assessors assigned to each candidate shall determine if (i) determine if the candidate had made sufficient progress in the taught courses (ii) Certify if the research protocol is sufficient for a PhD programme and (iii) provide advice on the way forward for the doctoral programme for the candidate.
4. General advice will also be provided on areas the candidate may need to adjust the scope of the research in order to be suitable for the award of a doctoral certificate

Doctoral Dissertation

Refer Centre's Guide to Postgraduate Thesis/Dissertation Preparation, Submission and Examination

Submission of protocol

In consultation with his/her main supervisor;

- The candidate shall notify the Centre Leader in writing of the title and full protocol of his or her dissertation.
- Be prepared to defend the proposal during the continuation report/viva
- Candidates are expected to request for a review of their proposals by the University's Ethics Review Committee

Doctoral Dissertation Defense

1. For the final defense of the doctoral dissertation, the Board of the school of Graduate Studies Committee shall approve external examiners for the defense. The Board of examiners for each defense shall consist of the Dean of the School of Graduate Studies (or representative), the Centre's Leader, the Centre's Academic Coordinator, the main supervisor and the external examiner.
2. The defense shall involve a short PowerPoint presentation on their research by the candidate before the viva voce.
3. The examiners shall submit a joint report on the candidate to the Dean of the Graduate School. The report shall contain:
 - i. A clear and detailed evaluation of the research as contained in the dissertation, including an assessment of the originality, methodology and its contribution to the advancement of knowledge;
 - ii. A clear assessment of the candidate's knowledge and understanding of his/her subjects as shown in the dissertation and oral examination;
 - iii. An unequivocal declaration as to the acceptability or otherwise of the dissertation in fulfillment of the requirements of the degree;

- iv. In case of difference of opinion, the examiners shall submit separate reports to the Centre's Academic Committee, which shall make an appropriate recommendation to the Centre's Board and to the School of Graduate Studies.

Credits for doctoral programme

- Taught courses and seminar – 21 credits
- Dissertation – 12 credits
- Total credit – 33 credits

The School of Graduate Studies has already approved all the course outlines for the PhD programme. The courses for the programmes are outlined below:

List of courses, code and credit units

Area	Course	Code	Unit
General	Entrepreneurship	PUT 901	3
	Advanced Biostatistics and Data Science	PUT 902	3
	ICT, Technical Writing & Presentation Skills	PUT 903	3
	Environmental Epidemiology, Exposure Science & Risk Assessment	PUT 904	3
	Seminar	PUT 905	3
	Research Methods	PUT 906	3
	Research Project	PUT 907	12
Environmental Toxicology	Environmental Toxicology	PUT 908	3
Nutritional biochemistry/toxicology	Advanced Nutritional Biochemistry	PUT 909	3
Environmental Health	Analytical Methods in Environmental Health	PUT 910	3

Courses description

PUT 901- Entrepreneurship (3 units)

This course teaches how to recognise, analyse and develop business opportunities. It will expose students to the various aspects of commerce – accounting, finance, marketing, management as well as the relevant legal and regulatory frameworks. The course will also introduce the students on

- Ways of commercializing their research outputs and how they can develop knowledge enterprise.
- Understanding the dynamic role of entrepreneurship and small businesses

- Organizing and Managing a Small Business
- Financial Planning and Control
- Forms of Ownership for Small Business
- Strategic Marketing Planning
- New Product or Service Development
- Business Plan Creation
- Challenges of doing business in Nigeria and other developing countries
- Research as an enterprise

PUT 902 - Advanced Biostatistics and Data Science (3 units)

This course teaches the concepts of biostatistics and the application of biostatistics in real world issues. Statistical methods and principles necessary for understanding and interpreting data used in public health and policy evaluation and formation. Topics include:

- Descriptive statistics, graphical data summary, sampling, statistical comparison of groups, correlation, and regression.
- Probability and advanced statistical theories
- parametric and non-parametric statistics,
- Poisson distribution, Regression modeling, statistical software appreciation and bioinformatics.
- Data Science introduces the concept and tools needed in turning open and real-world data into solving real world problems via mastering data communication, data investigation, data wrangling, cleaning, sampling, exploratory analysis and data Visualization skills.
- Students will learn the powerful statistical program in R and how to use R for effective data analysis and statistical programming. The course will also cover practical issues in statistical computing with R, especially in reading data into R, accessing R packages, writing R functions, debugging, profiling R code, and organizing and commenting R code.

PUT 903 – ICT, Technical Writing & Presentation Skills (3 units)

The purpose of the course is to familiarize the participants with academic writing, grammar & syntax, critical thinking and problem-solving skills, summarizing, paraphrasing journal critique techniques and preparation of manuscripts and dissertation reports. Preparation and presentation at conferences and scientific meetings.

Participants would also be exposed to various statements/guidelines/checklists for reporting academic manuscripts such as:

- CASP – Critical Appraisal Skill Program
- CONSORT – Consolidated Standards of Reporting Trials
- PRISMA – Preferred Reporting Items for Systematic Reviews and Meta-Analysis
- ENTREQ – Enhancing Transparency in Reporting the synthesis of Qualitative research
- COREQ – Consolidated criteria for Reporting Qualitative Research
- CARE – Case Report guidelines
- SQUIRE – Standards for Quality Improvement Reporting Excellence
- STROBE – Strengthening the Reporting of Observational Studies in Epidemiology

ICT and Presentation Skills Writing a Draft Journal Article

PUT 904: Environmental Epidemiology, Exposure Science & Risk Assessment

The candidate will study the principles and practice of advanced epidemiology and general concepts of assessing environmental exposures to chemicals in human populations. This course will also teach natural and environmental toxicants; food toxicology and carcinogens; mutagens, teratogens, allergens; neurotoxins, endocrine disruptors; detoxification of toxicants; microbial and insects' metabolism of xenobiotics; metabolism as a determinant of toxicity and assessment of toxicity; metabolism of hydrocarbons and other toxicants; human exposure to environmental contaminants;

Course Content

- Introduction to principles and practice of epidemiology
- Confounders, effect modification/interaction, causal inferences, outbreak investigations,
- Geo-mapping/GIS, surveillance, receiver-operating characteristics curve, and surveys
- The design of ecologic and personal monitoring studies
- The techniques and equipment used for sampling and analysis, and interpretation of data.
- The linkages among external concentrations, spatial and temporal parameters,
- Risk assessment: concept and models
- Recent topics in risk assessments
- Food safety;
- Modern environmental health hazards in non-communicable diseases
- Biomonitoring; metals in diseases; metal toxicology: lead, mercury, cadmium, arsenic, chromium, nickel, vanadium, cobalt, manganese, iron, copper, etc;
- Persistent organic pollutants (POPs) and dioxins
- Plastics toxicology
- Soot and aerosol toxicology; ozone, a criteria air pollutant; Natural antidotes; Unraveling toxic mechanisms
- Biomarkers for toxic effects; predictive toxicology; regulatory aspects; introduction to systems biology; definition of fundamental concepts;
- Cognitive effects of early exposure to environmental toxins, such as hydrocarbons, heavy metals, methylmercury, and other environmental toxicants on children and infants including exposure via breast milk

PUT 906 – Research Methods (3 units)

This course acquaints the students with principles and practice of advanced research methods in public health practice. Broad areas include systematic review, meta-analysis, meta-synthesis, quantitative and qualitative surveys, advanced literature search and data synthesis

Course Content

- Research Process, Designs, and Human Subjects Protection
- Research Question and Literature Review
- Data Collection and SPSS
- Descriptive Data Analysis
- Inferential Data Analysis
- Reporting the Results
- Interpreting the Results

- Thinking Skills for conduct of research

PUT 909 - Advanced Nutritional Biochemistry (3 Units)

This course is aimed at providing candidates with the principles of human nutrition. It is also aimed at providing an integrated overview of the physiological requirements and functions of protein, energy, and the major vitamins and minerals that are determinants of health and diseases in human populations. This course will also highlight principles of food and nutrition science relative to the health and well-being of the individual and the community. The chemical composition and functions of the essential nutrients, and how they are processed and utilized in the body. Dietary habits, nutrient requirements, food choices, healthy eating practices will also be highlighted. This course will also cover all theoretical/practical aspects of nutritional status assessments such as anthropometric measurement, dietary assessment etc. Screening topics will include the following:

Introduction to Nutrition : The need for food; Dietary sources, intake levels, physiological role, and requirement of major nutrients; The biological determinants of nutrient requirements and the assessment of nutritional status in individuals and the populations; The role of nutrition in growth and health through the life cycle; The rationale for the development of dietary guidelines and nutrition policies in different countries; Nutrition and Biotechnology; Community nutrition; Maternal, infant and child nutrition; Nutrition in Health and Disease; Nutritional Epidemiology; Nutritional Assessment; Molecular Nutrition; control of food intake and regulation of body weight, as well as animal models of obesity; factors that affect the absorption, metabolism and storage of Vitamin A, as well as the association between Vitamin A deficiency and disease; Effects of nutritional alterations — for example, iron deficiency, folate alterations and PUFAs—on mortality, work capacity, and behaviour and cognitive functioning; Nutrition and physiological state (growth, reproduction, pregnancy, lactation etc.) and nutritional disorders of metabolic origin

PUT 912 - Analytical Methods in Environmental Health (3 Units)

Students in this course learn the skills, methods and critical thinking framework necessary for upper level environmental health courses and for success as public health professionals. Environmental Health is a field of public health in which environmental hazards and health risks to populations are identified, assessed and managed through a data-driven process. This course would introduce students to:

- Nature of the physical, social and biological environment
- Human ecology
- Advance environmental forensic
- Methodologies and techniques to obtain data in environmental health
- Sampling, handling/storage of samples, sample preparation and determination.
- Advanced environmental analysis in connection with advanced statistical methods including pattern recognition, multivariate statistics and experimental designs

PUT 905 - Seminar (3 Units)

Seminar presentation on specified aspects of research will be presented such as literature review, public health significance, key findings and implications and finally present research for external defense.

The dissertation will be an outline PhD proposal and a small piece of empirical work. The research proposal should indicate what the PhD might be along with, what the empirical work might be. The candidate's research will be supervised by academic and/or industry member of staff. The format of the report shall be in accordance with the existing guidelines from the School of Graduate Studies.

Centre Registration

Students who have been admitted into any of the training programme in PUTOR are expected to undertake a non-audit cause tagged 'foundation to graduate studies in PUTOR' This follows their acceptance of admission and required registration. The students are expected to come along for registration with

- Admission letter
- Copies of their credentials – original and photocopies
- Evidence of payment of all fees and dues.

The Centre's registration process would involve filling of necessary forms and submitting relevant documents which would all be contained in the student's file in the Centre. Candidates are expected to come with all their academic credentials and evidence of release (for those in paid employments)

Academic Regulations

General objectives of courses

All courses offered shall explore:

- New developments in technology, policy and process;
- New concepts and practices in education for sustainable development;
- Address regional, national and global perspectives and consider issues bordering on bioethics, poverty eradication, development and growth, unemployment and employability, energy crises, overpopulation, etc.

Academic session

An academic session consists of two semesters. Each semester normally comprises of 17 weeks of teaching and examination.

Modular training system

The courses shall run on modular basis but still based on the course unit system. All courses are designed as modules that would start and end anytime within the session/semester. Typically, each course would be assigned 1-month block period for teaching and examination shall come any time after the completion of each course. Credit weights shall be attached to each course.

Definition of credit unit

Credits is weights attached to a course. One credit is equivalent to 15 hours class contacts (e.g. one hour per week per 15 weeks of lectures or tutorial). In addition to the class contact hours, all students are expected to invest on assigned minimum private study hour to make the best of every course.

Timetable

Lecture timetables are released at least two weeks before the first day of lectures. For large classes, the different streams shall be allocated the same slot on the timetable and the streams taught in parallel classes running at different venues

Training Methods

A blended approach involving several innovative learning and instructional strategies are deployed in the Centre of Excellence in order to achieve the learning objectives of each modules. The specific strategies applicable to each module as stated in the description of the module are based on the needs to enhance students' participation based on recognised learning styles.

- Didactic lectures
- Tutorials and Discussions
- Group activities
- Seminars
- Field visits to places of public health importance including health-related institutions and industries
- Competency-based learning and reflection
- Community-based field training - Health surveys involving households, under-fives, primary school, and secondary school in both rural and urban communities; outbreak investigation, job setting – real situations or through simulations
- Research project
- Practical – both public health-related and computer training
- Self-directed learning.

Attendance and Participation

Logbook and attendance.

It is the responsibility of the student to document all training activities and progression in the manual or electronic logbook that would be used throughout their training and ensures that he/she:

- Attends all lectures, which may be signed by the respective instructor(s) in his/her logbook.
- Attends all clinical field activities that are carried out and should be signed by the supervisors
- Attends and participates actively in all group activities including community service
- Completes a project approved by the Centre and duly certified by the project supervisor

Attendance at all training activities is mandatory and only students that make at least seventy-five percent (75%) attendance and participation in all activities, duly certified by lecturer/supervisor shall be eligible to sit for the examination.

Regulations during lectures and visits

In the course of attending any outside visit or post, kindly note that you [course member] are ambassadors of the university. Please remember the following:-

- a. Punctuality is essential, and you must be in the venue at least 5 minutes prior to the visit's commencing. If you are late for a session you may not enter the room but wait for the next break.
- b. You should attend for the whole of the visit and may not leave early. If you cannot attend the whole session, please do not attend.
- c. Please do not use laptops to surf the internet or make/answer phone calls during lectures/visits. All phones must either be switched off or be on silent mode.
- d. No talking during the lectures. Talking disrupts the class and may distract the presenter
- e. No eating or drinking of anything other than what may be provided at specified times
- f. Do not ask unnecessary questions. Question sessions are designed to give opportunities for clarifications of certain aspects of the visit you have not understood and not opportunities for general inquiries. You can consult other available resources for answers to some of the questions you may have outside of the presentation.

All students are expected to attend and participate fully in all components of the course for which they are registered unless excused, for good cause. The University's regulation is that all students obtain 75% attendance record and complete all the assessments associated with the course. Failure to make up the attendance or complete assessments will mean that the student will not normally be eligible for the award of a degree of the University other than at the discretion of the examiners and college authorities.

Dissertation

The candidate must design and execute an acceptable original project in any area related to his/her discipline under supervision of academic staff and in some cases additional supervision from industry/sector expert. The project would commence during the first year of the programme for PhD students. The details of the preparation, submission and examination of thesis in the Centre are contained in the Centre's Guide to Dissertation.

Seminar

Postgraduate students are expected to prepare and present some seminars in the course of their training. Some of these seminars are related to the educational components of the candidates' thesis/dissertation and are presented before the entire faculty and students in the Centre.

Instructions for the seminar

Students are to note the following salient information with respect to the seminar:

- Drop two loose copies of the work (in words) with the Centre's Academic Coordinator and send a copy by email to academic@aceputoruniport.edu.ng not later than two weeks to the date fixed for the presentation
- Venue and date for the presentation will be sent to all the candidates along with other useful information on the seminar about two weeks to the date of the seminar.
- Students are to confirm their eligibility for participation in a seminar or report any change in their circumstance to the respective programme coordinator at least 4 days to the date of the seminar.
- Presentations shall be by power points and shall last for a maximum of **15 minutes** while the subsequent discussions shall last for a maximum of **20 minutes**
- For group presentations, all members of the group may not necessarily be part of the presentation but must be involved in the subsequent discourse.
- Discussions would be based on the broad areas related to the subject being presented
- Candidates are to report to the venue of the presentation in formal dressing at least one hour to the time and ensure that all logistics and technical aspects of the presentations have been sorted.

Seminar scoring

Scores would be assigned as detailed below

- Internal assessors scores
- Participating assessors scores

While the scores of the internal assessors may be based on the technical considerations (structure and content) before the presentation, the participating assessors' scores may include considerations to actual presentation and discussion

Examinations

Grading during course

Continuous Assessment (30 %). This can be in various forms such as:

- Attendance at classes
- Seminar presentation
- Assignments and coursework during lectures or postings
- Participation and performance during classwork or practical activities
- Written assessments

Grading during final examination

Final Examination at the end of the posting (70 %)

- Shall be in the form of Essay, MCQs, Practical, and Orals and would be 70%.

Pass mark

The minimum pass mark in any course shall be **50%**

Grading system

Grading of courses shall be by a combination of percentage marks and letter grades translated into a graduates' system of Grade Point Equivalents (GPE).

Computation of Grade Point Average

Every course carries affixed number of credit units (CU), one credit unit being when a class meets for one hour every week for one semester, or three hours every week in the laboratory, workshop or field.

Quality point (QP) are derived by multiplying the credit units for the course by the Grade points; earned by the students: e.g. in a course with 3 Credit Units in which a student earned a B with 4 Grade Points; the Quality Point is $3 \times 4 = 12$.

Grade Point Average (GPA) is derived by dividing the Quality Points for the semester by the Credit Units for the semester: e.g. in a semester where the students earned 56 Quality Points for 18 Credit Units, the GPA is $56 \div 18 = 3.11$.

Cumulative Grade Point Average (CGPA) is derived by adding the Total Quality Points (TQP) to date and dividing by the Total Credit Units (TCU) to date: e.g. if the TQP is 228 and the TCU is 68, then the CGPA is $228 \div 68 = 3.35$

Detailed examples of how to calculate GPA and CGPA are shown below

Grade obtained in all approved courses of a student's prescribed programme, excluding audited courses, shall be used to compute the GPA.

When a student transfers from one Faculty to another, only the grade obtained in the courses in the new programme of study will be used to compute the CGPA. Courses which were completed before the change of programme will be treated as audited courses.

When a student transfers from another University, only the grades obtained at the University of Port Harcourt will be used to compute the CGPA.

Each course shall be graded out of a maximum of 100 marks and assigned appropriate Grade Point Equivalent as in the table below:

(i) Credit units	(ii) Scores	(iii) Letter Grades	(iv) Grade Points (GP)	(v) Average (GPA)
Vary according to contact hours assigned to each course or according to load carried by students	70 and above 60 – 69 50 – 59 0 - 49	A B C F	5 4 3 0	Derived by multiplying i and iv and dividing by Total Credit Units

Examination resit policy

A resit means that a student had failed a course and is required to undertake a second attempt of that course without further teaching input. The programme allows resit of continuous assessment and examination. The resit examinations is completely a different piece of

assessment and shall be arranged within three months of seating for the original examination. Scores of examinations undertaken during resit shall be capped at 50%. Students are not allowed to resit courses which they have passed. If the mark attained during the resit is lower than that of the first attempt, the resit score will still be recorded. Any candidate who fail to attempt a resit assessment during the allotted period without prior approval from the Centre administration will earn a mark of “0”. A student who successfully applied for exemption from the original scheduled examination on the basis of extenuating circumstances shall be accorded a ‘first attempt’ status and have the full marks recorded during the resit examination. In the event of another fail during the resit examination, a student would be allowed to repeat the course during the next opportunity the course is taken. This is subject to payment of tuition fee for the additional year and the discretion of the Centre Academic Board. The latter is without prejudice to the University regulation on the length of stay of students in various programmes in the University.

Other regulations of examination

In accordance with the Statement of Academic Policy of the University herein stated in this Regulation, the following terms shall mean

- I Invigilators: These are those who conduct examinations.
- ii Supervisor: This is the most senior lecturer among the Invigilators
- iii Examiners: These are the course lecturers.
- iv Examination Officers(s): The examination officer(s) oversee(s) the conduct of all examinations in the Department and upload(s) Senate approved results on the University portal.

- The examination timetable shall be released at least three weeks before the scheduled date of the start of examinations. Scheduled times and dates for examinations must be adhered to. If it is found necessary to reschedule an examination, this must be with the permission of the Academic Coordinator and Centre Leader.
- Examiners should ensure that the question papers are prepared under conditions of maximum security and are ready on time. For all examinations, well-packaged question papers must be accompanied by a list of Supervisors, Invigilators and the relevant forms. The Examiners should ensure that the question papers, adequately packaged and sealed, are submitted to the Supervisor, at least, one hour before the start of the examination.
- Subject only to administrative supervision by the office of the Centre Leader, the conduct of course examinations shall be the responsibility of the Course or Programme Coordinator.
- For each examination, there should be a Supervisor and enough Invigilators, including both male and female Invigilators.
- It is the responsibility of the academic coordinator to appoint Supervisors and Invigilators. The list should be forwarded to the Centre Leader not later than one week before the examinations. Students should be seated according to their registration numbers, and they should be invigilated by academic staff from the Centre.
- Supervisors should be appointed from the rank of Senior Lecturer, and above and Invigilators should be other members of academic staff. Part-time teachers, where necessary, are also regarded as Examiners.
- Supervisors must identify and check students into the examination hall using the authenticated register of students for that course. The student must show the invigilator

his/her registration/identity card on entry to every examination. He/she must leave this on the desk throughout the examination for easy inspection by the invigilator.

- All examination scripts used by the students must be endorsed by the Supervisor at least 30 minutes after the commencement of the examination.
- The Invigilator must ensure that no student removes from the examination venue any paper or other examination material except the printed question papers where it is allowed. Answer booklets are the property of the University and must not be in the possession of students.
- During examination, the security department should beef up security especially around the examination Centre to ensure that those not involved in the examination are not allowed to loiter around the examination halls.
- No unregistered student is authorized to take any examination.
- A student should be in the examination room at least 30 minutes before the start of the examination. A student who is up to 30 minutes late shall be admitted but shall not be given any extra time. A student who arrives more than 30 minutes after the start of the examination shall not be admitted. A student may be allowed to leave the examination room temporarily before the end of the examination, but must NOT:
 - do so during the first hour of the examination except in cases of emergency like illness;
 - do so unaccompanied OR with his/her scripts.
- Students must write their names, registration numbers and sign the attendance register within the first hour of the examination.
- Students must write their registration numbers (not name) at the appropriate places on the cover and pages of the answer booklet.
- No student shall bring in any handbag, mobile phone, briefcase, books, notebooks, or papers etc. into the examination hall.
- No student shall directly or indirectly give or accept any assistance during an examination.
- Students shall stop writing at the end of the allotted time for an examination at the instruction of the Supervisor or Invigilator(s).
- Anybody who disrupts an on-going examination shall face appropriate disciplinary action.
- At the end of the examination, the Supervisor/Invigilator shall ensure that the answer scripts are checked, properly packaged, and returned along with relevant forms to the Examiner.
- A member of staff who fails to turn up for invigilation shall be queried for this act in the first instance. If this is repeated during another period of examination, the member of staff will lose the next promotion and be warned in writing by the Vice-Chancellor.
- The Centre Leader shall report any defaulting Invigilator to the Provost/Dean, whose responsibility it is to forward the report to the Vice-Chancellor.
- These examination regulations apply to all students studying for the award of University of Port Harcourt Degree, Certificate and Diploma.

Code of conduct during Examination

1. It is the responsibility of each individual student intending to take any university examination to ascertain the date, time and the venue of the examination as indicated in the examination timetable. Candidates must present themselves at the examination venue thirty (30) minutes to the scheduled time of commencement of the examination.

2. Candidates will not be admitted to examination hall after the examination has been in progress for thirty (30) minutes. Candidates will not also be allowed to leave the examination hall during the first thirty (30) minutes and the last fifteen (15) minutes of an examination.
3. Candidates will not be permitted to start an examination until formally instructed to do so by the Examiner/Invigilator in-charge of the examination.
4. Candidates wishing to leave the examination hall must obtain the express permission of the examiner/invigilator before doing so. Any candidate permitted to leave an examination hall temporarily must hand over his/her question paper(s) and answer script(s) to the examiner/invigilator and must be accompanied by the examiner/invigilator or a person appointed by the examiner/invigilator.
5. Candidates may take printed materials or manuscripts into an examination hall when it has been previously announced in the examination timetable and when it is stated in the instructions to the question paper that such materials may be used.
6. All briefcases and other materials not associated with the examination must be deposited at a designated place. Candidates will however, be allowed to use their own mathematical instruments/tables and such other aids for drawing as the examination/invigilators may permit.
7. The use of mobile phone, electronic programmable calculator, information storage devices calculator instruction manuals, textbooks, atlases, lecture notebooks, etc shall not be allowed in the examination halls.
8. Candidates must sit at the desk assigned to them by the invigilator. The university administration will not condone any swapping of seats by candidates.
9. It is compulsory for candidates to sign the examination attendance register when the examiners/invigilators present to them during the examination
10. Candidature must ensure that their answer scripts are handed over to the examiner/invigilator before leaving the examination hall
11. Smoking, chewing of gums and the consumption of food and drinks are not permitted during the examination
12. All questions in written examination must be answered in simple English unless instructions on the question paper indicate otherwise
13. It is an academic offence punishable by expulsion from the university for any candidate(s) to prevent other candidate(s) from taking scheduled university examinations or cause obstruction to examination processes.
14. Any candidate unable to sit for an examination on account of illness duly certified by a medical authority approved by the University's Director of Medical Services may be allowed to take the examination at the next period as first attempt. The affected candidate shall notify the Dean, School of Graduate Studies through the Centre Leader of this fact and shall submit a valid medical certificate to be authenticated by the Director of Medical Services.

Documentations related to examination

At the commencement of examination

The following materials should be made available

1. The answer sheets
2. The question papers
3. The course evaluation form

4. The student attendance sheet which should be signed by all students present for the examination
5. The invigilators' attendance sheets should be signed by all invigilators (academic and non-teaching) present during the examination
6. Incident sheet for examination misconduct

Immediately after the examination

1. The answer sheets should be counted by at least two invigilators who must sign to authenticate the number of scripts on the envelop meant for each question.
2. The course evaluation forms should also be counted and packed in a separate envelop
3. A copy of the question paper, the students' attendance sheet, the invigilators' attendance sheet, the completed course evaluation forms, filled incident sheet for examination misconduct (if any) should be sent to the Centre leader through the secretariat staff present during the examination

Two weeks after examination

The marked scripts, marking scheme and result should be handed over to the programme coordinator by the course coordinator. Lecturers and coordinators who have submitted their marked scripts, marking scheme and results would be paid all entitlements immediately.

Four weeks after examination

The programme coordinator sends the marked scripts, marking scheme and results to the Centre leader.

Documents kept in the Centre's record each course

1. Question paper
2. Marking scheme
3. Result
4. Signed attendance sheet by students
5. Signed attendance sheet by supervisors
6. Completed course evaluation forms
7. Completed examination misconduct incident form

Overstay

Candidates who at have stayed more than one year beyond the assigned number of years are deemed to have overstay. For a full-time PhD programme, this is equivalent to staying more than 4 years. According to the university's Senate, those deemed to have overstayed are meant to re-apply and start afresh if the candidate is still interested in obtaining a certificate at completion of the programme. This process would involve their getting a new form and new registration number as done by new students.

Completion of programme

A student is said to have completed his/her programme when s/he had successfully completed all the prescribed courses in the programme, undertaken an internship period and defended his/her thesis, carried out minor or major corrections as directed, have the work certified by the appropriate officers and submitted to the department for submission to the College of Graduate Studies.

Master's Degree students are expected to have at least one (1) article from their work in publishable format before their oral examination and attend a minimum of one (1) scientific conference. All PhD students are expected to have at least two (2) articles from their work in publishable format before their oral examination and attend a minimum of one (1) scientific conference where they would present findings from their research

Temporal withdrawal from study

Any student who has a genuine reason(s) to apply for temporary withdrawal from study should apply to the university in writing through the Centre Leader stating the reason(s) for his/her application and needs to obtain approval from Senate.

The application should specify the period (session) to be away and the session for the resumption of study. The Centre Leader shall furnish the School of Graduate Studies with the CGPA of the student at the time of the request, and this must be presented to the Senate of the University.

Regulations, Procedures and other elements of the Programme

Submission of course work/assignment and presentations of seminars

The ability to present material lucidly is an increasingly important skill which must be acquired by professionals including our trainees. Consequently, course members are given opportunities to improve their communication skills during the course by being involved individually or in groups in presentations.

Where seminars on various topics or presentation of surveys and visits are done, written reports of such seminars shall be submitted in bound form to the department. The APA style of referencing (<http://www.apastyle.org/>) shall be used for all academic submission including the FINAL THESIS. All submissions for assessment shall be done online and shall pass through the anti-plagiarism test of the Centre.

A penalty is applicable for late handing in of assignments which is equivalent to a 5% reduction per working day of delay. The penalty is subtracted from the final total mark of that assignment.

Course paper/assignment can be submitted individually or collected by the course representative before the deadline and submitted to the course instructor. Where it becomes difficult to get the course instructor, they can be dropped with the secretary in the departmental office. Please note that the date of submission in this case is taken as when it is dropped with any responsible officer of the programme.

Assessment planning procedures

All concluded modules are examined in accordance with the university's practice. The date, venue and structure of the final examination for each module shall be included in the course schedule sent to students at least two weeks before the commencement of the module. The examination questions are prepared by the responsible instructors at the end of the various courses. Invigilation of final examination shall be arranged by the programme coordinating unit. It is pertinent to note that the date and venue for examination can be adjusted with the consent of both the instructors and students.

Results of examination

Results of every examination are approved by the Centre's Academic Board. Although students' scores are expected to be turned in within one month of conclusion of the various examinations, these results shall only be made official after being endorsed by the Centre Academic Board. The dates for the meeting of the Centre Academic Board each session shall be

communicated to all stakeholders. Approved results by the Centre shall be handed over to the Centre's head of administration who shall send the required copies of these results to the school of graduate studies, other relevant units of the university and place these results on the notice board. The Centre's academic coordinator shall also ensure that all results are archived in the Centre and on students' portals.

Plagiarism and malpractice

As a student in this course you are expected to maintain high degrees of professionalism, commitment to active learning and participation in this class and integrity in your behavior in and out of the classroom. Plagiarism, cheating, and other misconduct are serious violations of your contract as a student. Plagiarism is to steal and pass off (the ideas or words of another) as one's own: use (another's production) without crediting the source.

According to *Merriam-Webster Encyclopaedia*, it is to commit literary theft: present as new and original an idea or product derived from an existing source

The department accepts plagiarism as:-

“The use, without acknowledgement, of the intellectual work of other people, and the act of representing the ideas or discoveries of others as one's own in any work submitted for assessment or presented for publication. To copy sentences, phrases or even striking expressions without acknowledgement of source (either by inadequate citation or failure to indicate verbatim quotations) is Plagiarism; to paraphrase without acknowledgement is also plagiarism”.

The Centre and indeed the university take a very serious view of plagiarism and regards it in the same way as it regards cheating in written examinations. While it is perfectly correct to

reference others work in theses and assessments, it is unacceptable to "lift" or copy tracts of other work from literature on (or) the internet.

Furthermore, while it is acceptable to seek the advice of university staff and other course members on assignment work, it is generally unacceptable (unless otherwise advised by university staff) to submit identical work for assessment. If you are found to have collaborated in circumstances where it is not permitted or to have plagiarized someone else's work, the likely outcome is that you will get zero marked for that subject (seminar or project) or in more serious cases, you could be referred for further disciplinary actions by the university. In any case, the process is very unpleasant and could have severe implications for your future career prospects. If you are in any doubt about either plagiarism or collaboration, you must seek the advice of your supervisor or the academic member of the programme who is responsible for teaching research methods.

[Examination Malpractices](#)

According to the university's regulation, any graduate student found cheating in any examination shall be expelled from the university.

[Abuse and sexual harassment](#)

The Centre and indeed the University view abuse and sexual harassment as very serious offences. The details of what constitute these offences and how cases are handled by the Centre are available in the [Gender violence and related offense policy](#) document of the Centre.

Research governance

Research forms part of the training of all postgraduate students in the University of Port Harcourt. As such, all master's and PhD students are expected to undertake an independent, original research in various areas of study. They are also expected to publish, present aspects of the findings of their research in local and international conferences and before graduate, defend the report before a Board of Examiners.

Students' engagements during training

Students belong to different training groups and are involved in several activities in the course of their study in the Centre. It is recommended that each student keeps a detailed inventory of their activities alongside their reports on their progress. The typical spectrum of these involvement is shown in the figure below:

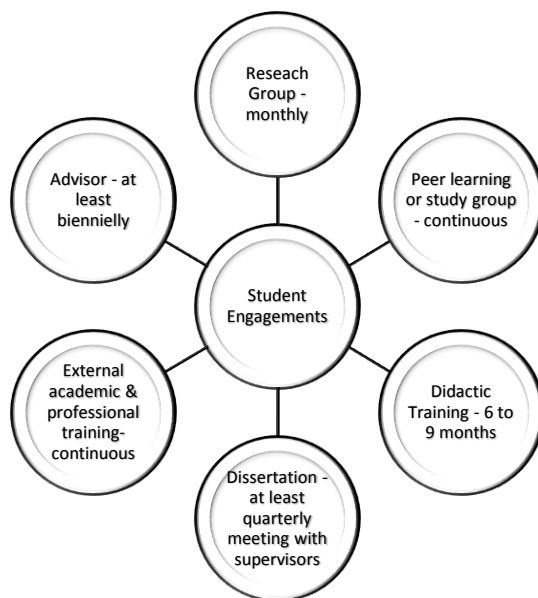


Figure 1. Students involvements during training

Research Groups

The research groups occasionally undertake specialized methodological training, collaborative research, evidence synthesis. Despite the expediency for individualized research, the complementary skills that come to bear in group research offers promise of tremendous benefits in tackling complex and important problems, producing high quality work with group members learning from each other. Additionally, the research group is a perfect forum for discussing individual research. The current research groups in the Centre include – Environmental health, toxicology, nutrition and nursing. Others available in the University of Port Harcourt School of Public Health include health services/systems, population/reproductive health and epidemiology research groups. There is a broad range of cross-cutting activities between these centres and with the departments

of Preventive and Social Medicine, Biochemistry, Experimental Pharmacology, Nursing, Centre for Health and Development and Centre for Marine Pollution and Seafoods Safety. Students in this Centre are permitted to attend academic and professional trainings/seminars holding in any of these collaborating units

Scholarships

Scholarships are provided each year to deserving students who apply for full time study and have no means of meeting up with the cost of their education. This decided through a merit-based screening procedure. These are of two categories – regional and local.

The benefit package from each of these scholarships are different and may also vary from session to session. It shall commonly include payment of tuition and students' accommodation. The number of national scholarship slots shall be divided equally between males and females and shall only be available for full-time students with excellent academic track records including performance in the entry screening exercise. As this is reserved for indigent students, every student who requires a scholarship, applies to the Centre Leader stating their economic status and how the scholarship would assist their academic pursuit. All applications shall be screened by 'Scholarship Screening Committee' whose membership include: Deputy Centre Leader, The Academic Coordinator, Student Support Officer and the representative from the School of Graduate Studies.

Financial Support

Besides scholarships, students are also entitled to other financial support for internship, research and conference attendance. Internship placement are often secured by the Centre in industries, sectors and government agencies relevant to the research work of the students. The Centre's merit-based system accommodates sponsorship for 1-month internship for the best student (by CGPA) in the early training anywhere in the world including Europe and America. The price tag is currently fixed at \$4,000 (four thousand dollars). The second and third best students are permitted to do same within the African region with a support of \$2,000 (two thousand dollars). The rest can either do so in Rivers state with a support of N50,000 (fifty thousand naira only) or outside Rivers but within the country with a sponsorship support of N100,000 (one hundred thousand naira only). These provisions are however subject to the availability of funds and the financial regulations in the University.

Research support is provided for eligible masters and PhD students whose research topics are deemed to be relevant to the public health effects of environmental pollution especially from oil and gas activities. Students who are interested in this support are required to apply with details of their research proposal including the cost of the elements of their work the funding will cover. The cost element can also include cost of attendance of conference, publication of their research or other forms of dissemination of their research finding. The decisions on who qualifies for this support are made annually by a team headed by the Centre's applied research coordinator. Other members of this assessment team include the research team leaders from the various collaborating departments. Where applicable, the current ceiling for such support is N100,000 (One hundred thousand naira only) for master-level students and N300,000 (three hundred thousand naira only) for PhD students. These

provisions are however subject to the availability of funds and approval by the University.

In exceptional cases, additional funding can be made available to deserving students who:

- a) Wish to present their research findings in international conference.
- b) Have developed or are in the process of developing a patent or commercializing their research.

Request of such nature shall be directed to the Centre Leader and decisions are made on a case to case basis by the Centre Steering Committee

The ceiling for all routine supports given by the Centre Management shall be decided annually by the Centre's steering committee and communicated to prospective students during the application process. The request, disbursement and retirements of all expenses from these supports shall be in accordance to the Centre's financial management regulations.

Disability support

Nigeria ratified the United Nations Convention on the Rights of People with Disabilities (CRPD) in 2007 and subsequently signed into law the Discrimination against Persons with Disability (Prohibition) Act in 2019. The law prohibits discrimination against persons with disability by service providers and imposes sanctions including fines and prison sentences on those who contravene it. The Centre has responsibility under the act to make reasonable adjustments in all its activities to ensure that candidates with additional support needs are not disadvantaged for reasons related to their long-term medical condition, physical, visual and hearing

impairments, specific learning difficulties and/or disability. The Centre management shall ensure that students with disabilities are given special attention during enrolment, allocation of accommodation spaces, design and construction of lecture halls and provision of essential health services. Candidates with such needs are however expected to inform the Centre's management of arrangements and adjustments that need to be made to enable their full participation in lectures and examination. Further advice and support are available from support@aceputoruniport.edu.ng

Some of the important help and support contacts for the students are presented below:

Useful contacts and timelines for feedback

Contacts	Needs	Anticipated response time
info@aceputoruniport.edu.ng	For general information about the centre, programmes and events, linkages	24 hours
admission@aceputoruniport.edu.ng	Enquiries on admission into degree programmes and short courses	48 hours
academic@s@aceputoruniport.edu.ng	Information on academic issues, lecture schedules, modules and programmes feedback	72 hours

research@aceputoruniport.edu.ng	For support on research and submission of research presentation (research proposal, draft thesis etc) or research outputs such as conference abstract, proceedings, journal articles.	48 hours
support@aceputoruniport.edu.ng	Students' support, complaints, scholarships, accommodation, harassment, theft	24 hours
finance@aceputoruniport.edu.ng	Making payments, checking balance due	48 hours
technical@aceputoruniport.edu.ng	Use of ICT during modules and other activities, special technical assistance	24 hours

Student retention and progress monitoring

Our students are our greatest ambassadors and so we welcome every opportunity to share knowledge and impact them positively. Plans for retention and support of the students would commence even before enrolment and would cut across the traditional three main categories – social integration, academic integration and monitoring progress of the students' pathway.

Our academic advisory unit shall provide on-going service to intending students on the challenges of university life and provide online and onsite educational material bordering on questions and answer that may pose a challenge to the intending students.

A general orientation would be conducted annually for all fresh students of the Centre in addition to the non-credit module on *introduction to graduate studies*. This is to ensure that all fresh students quickly get adapted to their new learning environment, meet with the faculties and promote organisational integration.

The orientation would also provide an opportunity for the management of the Centre to collate the expectations of the new students and understand how to adapt the programme as much as possible to the need of individual student. It has been stated earlier that the Centre plans to provide enhanced scholarships and assistance to disadvantaged students especially foreign and female students through its welfare committee.

Each admitted student shall be provided a pathway which shows an interactive timeline of his or her key progression milestone specific to the research programme. Candidates who have an interruption, extension or changed their milestones would need to update their new progression milestone deadlines with the Postgraduate committee in the department.

In addition, current students are encouraged to form associations that would serve as a medium to share experiences and support themselves. Regular interactions between alumni and current students would also be arranged as this would provide additional support and social integration for the students especially the foreign students.

Accommodation

Accommodation within campus are often very competitive to get. Foreign students are provided shared spaces at available international Students hostels located along the East-West Road. Nigerian students are accommodated in the various postgraduate

hostels in the University. The Centre's students support officer would be of help to students who desire to be accommodated on campus.

Fee payment

Students are classified as private or sponsored based on fee payment. The fees payable by these categories are published before the start of the new session and are not subject to changes for that session. Students are expected to pay school fees annually and for the duration of their programmes. For programmes lasting more than a session, the school fee schedule at commencement shall remain unchanged through the stay of the student.

Payment of school fees is flexible, can be done in installments but should be completed before the end of third quarter of the session. Students can make arrangements for a personalized payment plan by communicating with the finance officers at finance@aceputoruniport.edu.ng

Students who fail to complete their annual payments at the end of the 3rd quarter of each session shall be asked to withdraw from their academic programme. The deadlines for such payments shall be sent to all students at the commencement of the session. Sponsored candidates would have to present their letter of sponsorship from the sponsoring institution, but they are still required to liaise with their sponsors for the payment of required fees. Stated fees are only for all activities done within the Centre, there may be other fees applicable and students are advised to seek clarifications from the office of the Dean of Students' Affairs before making additional payments.

Deferment of Admission

In line with the general regulation and statement of academic policies of the university, a candidate who has been admitted and is found qualified to be registered can defer the admission to the next academic year (for only one year) after payment of acceptance fee. The candidate must however, go through the clearance and deferment procedures at the Centre and the School of Graduate Studies.

Community service

This is a field project directed towards service to the community or the university and is an integral part of all degree programmes. The objective of the project is to involve both staff and students in a practical with some of the problems of society as well as with efforts to provide solutions to them, and inculcate and develop in both staff and students a consciousness of their responsibilities to society and the satisfaction of rendering services to others. Students' projects shall be of practical nature, require the application of some of the skills acquired during training and involve manual work. Although no credit unit is attached to this, all students are expected to undertake it individually or in groups. The community service unit of the university may be involved and can even coordinate the students' community service.

Library

The University of Port Harcourt boast of one of the biggest and most equipped libraries in Nigeria. This is called the Donald Ekong Library in the University Park opposite the Senate Building. The library provides books, non-book/electronic

resources and ancillary services which are invaluable in extending and supporting the university's programmes of teaching, learning and Research.

The Donald E.U. Ekong Library complex is made up of two wings A with three floors and B with two floors. Wing A has the Documents unit and the Knowledge Commons on the first floor. The second floor of wing A house the University Librarian's office, Technical Services Department, Finance Office and the Archives. The third floor houses the Thesis/Dissertation unit and the Research Commons

The main entrance and exit points to the library are on the ground floor of wing B. The Reference unit, offices and some book stack rooms are on the first floor of wing B. The other book stack rooms including offices, Elsevier E-Training Room, VTLS Cataloguing Room and the Server Room are located on the second floor of wing B.

Library Resources

Reference Books- Including dictionaries and encyclopedias, handbooks, Annuals, gazettes, biographies- essential for basic background information to all subjects Available in the REFERENCE section

Books on the open shelves- Includes a vast array of materials waiting on the open shelves. Use these materials to supplement your required reading and to write papers and assignments

Journals- Magazines and periodicals on the shelves to complement the electronic resources available. Journals are in the research section.

Electronic resources- Thousands of electronic journals can be accessed through our various database. The list of titles to which the library provides access can be found via the library's homepage. These databases provide access to full text journals on your PC.

Documents - Where you can find classified information concerning government agencies, International organisations e.g. WHO, UNITED NATIONS They also include statistical documents, material published by NGO'S, Census, Legislation etc.

Archives – Provides documents and materials in retrospect concerning the University. It also contains back sets of journals and other materials.

Miscellaneous information

Course Members' Representative

Each year the course members elect a representative who acts as a channel of communication between the course members and the staff, passing on comments or ideas about the course and associated issues. The staff highly recommends this practice, as it helps to create a co-operative staff-course member rapport and also provides the course members with a voice concerning matters that directly affect them. Occasionally, course members' representatives are invited to attend meetings of the Centre's Management Committee and are also co-opted into ad-hoc or statutory committees of the Centre.

Absence

From the point of view of management of the course, it is advisable for course members to inform the course instructors/coordinators if they are going to be absent for more than 2 days by completing the absence form attached in the appendix.

Illness

It is important in the case of illness for course members to immediately complete the Absence Form and forward it to the course instructor. Please remember to keep a personal copy of completed forms and sickness absenteeism is only valid when authenticated by the Director of Medical Services in the university.

Student Advisor

All students are assigned advisors at the beginning of their programme. The relationship between the student and the advisor is pastoral and expected to be structured and formal. The report on the meeting of students and their advisors are made available to the Centre Management Committee. The advisor will support the student (especially foreign students) with the right information and career guidance that would assist them to navigate the university system successfully. The interaction between the advisor and the student shall be continuous, consistent and require the generation of periodic feedback. The advisor shall play a pastoral role in mentoring and assisting the growth and development of the students; ensuring that the student's academic pathways is maintained; assist in resolving logistical issues that the student may be faced with. The PhD students are expected to meet at least twice a year with their advisors and the interaction between the advisor and the student would be documented on the e-progress report.

Guidance and Counselling

Guidance and Counseling Unit of University of Port Harcourt provides services for both staff and students of the university. Staff of the unit are available to counsel staff and students and provide other support. Those who need their services can contact them through suport@aceptoruniport.edu.ng.

Mentoring

Students are expected to join any of the mentoring schemes run under the various research groups in the Centre. These are

suitable for all health care scientist whether clinical or non-clinical.

Research

Typically, all students belong to one of the several research groups in the Centre. Although these research groups were established to entrench strategic thinking and long-term perspectives to research, they are also involved in routine short-term research. The membership of the research group includes academic lecturers, industry/sector experts, resident doctors, other health professionals, postgraduate students, undergraduate students. These group meet regularly for learning and undertaking collaborative research. Postgraduate students can also seek assistance on their dissertation from the group.

Recommended reading

Africa Centre of Excellence for Public Health and Toxicological Research Programme Handbook -

<https://aceputoruniport.edu.ng/uploads/Programmes%20handbook.pdf>

Africa Centre of Excellence for Public Health and Toxicological Research Guide to Postgraduate Research Thesis/Dissertation Preparation, Submission and Examination -

<https://aceputoruniport.edu.ng/uploads/ACE-PUTOR%20Research%20Guideline.pdf>

Africa Centre of Excellence for Public Health and Toxicological Research Gender-based Violence, Sexual Abuse and related Offences Policy -

<https://aceputoruniport.edu.ng/uploads/PUTOR's%20gender%20policy.pdf>

Africa Centre of Excellence for Public Health and Toxicological Research Environment and Social Safeguard Management Policy -

<https://aceputoruniport.edu.ng/uploads/PUTOR%20Environmental%20Safeguards%20plan.pdf>

University of Port Harcourt Intellectual Property Policy -

[https://aceputoruniport.edu.ng/uploads/SP-2012-2013-027Fiv%20\(Intellectual%20Property%20Policy\).pdf](https://aceputoruniport.edu.ng/uploads/SP-2012-2013-027Fiv%20(Intellectual%20Property%20Policy).pdf)

University of Port Harcourt Standard Operating Policy for Research Ethics Committee -

[https://aceputoruniport.edu.ng/uploads/SP-2012-2013-027Fv%20\(Standard%20Operating%20Procedures%20Research%20Ethics%20Committee\).pdf](https://aceputoruniport.edu.ng/uploads/SP-2012-2013-027Fv%20(Standard%20Operating%20Procedures%20Research%20Ethics%20Committee).pdf)

University of Port Harcourt Research Management Policy -

[https://aceputoruniport.edu.ng/uploads/SP-2012-2013-027Fii%20\(Research%20Management%20Policy\).pdf](https://aceputoruniport.edu.ng/uploads/SP-2012-2013-027Fii%20(Research%20Management%20Policy).pdf)

University of Port Harcourt Strategic Research Plan -

[https://aceputoruniport.edu.ng/uploads/SP-2012-2013-027Fiii%20\(Strategic%20Research%20Plan\).pdf](https://aceputoruniport.edu.ng/uploads/SP-2012-2013-027Fiii%20(Strategic%20Research%20Plan).pdf)

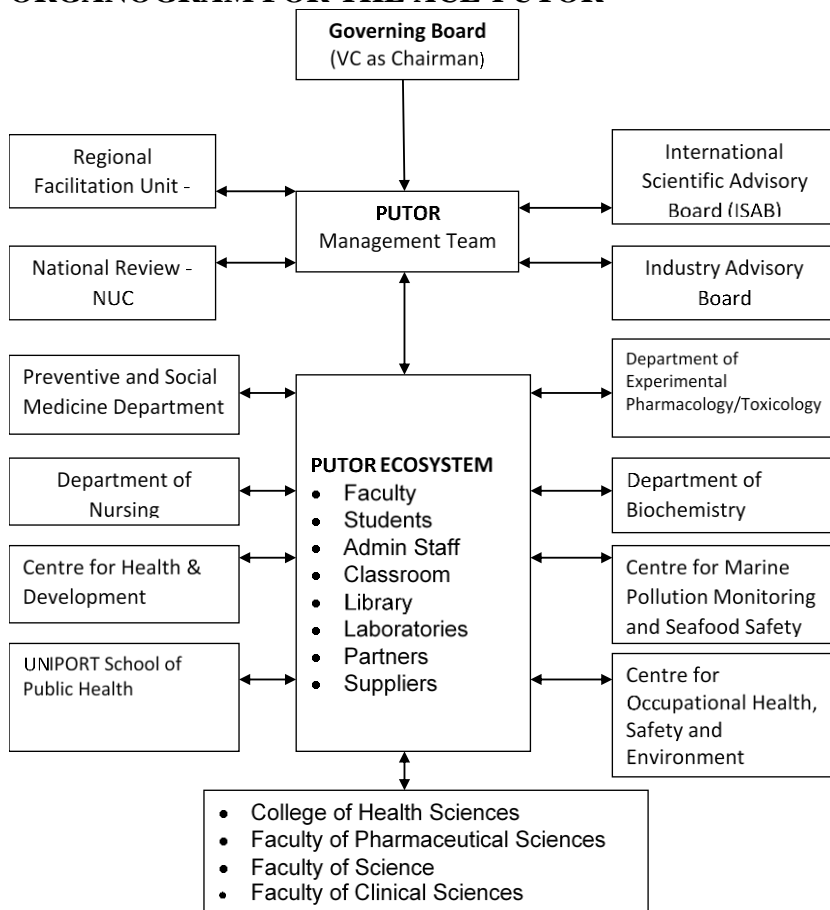
Annual Academic Progress Report

The yearly academic report on each graduate student is prepared either by the student's advisors for part-time master's students and both the advisor and main supervisors for PhD students. This report is sent through the Centre's Academic Coordinator to the Centre Leader and Dean of the School of Graduate Studies. This report will show the academic standing of each student and determine what judgment to pass on each student at

the appropriate time. This is to ensure that there is no permanent residency for any student.

Centre and Programme Administration

CENTRE COORDINATION AND MANAGEMENT ORGANOGRAM FOR THE ACE-PUTOR



The Centre Management Committee

This comprises the Centre Leader, the Centre Deputy Leader, the Centre's Administrative Team Leader, the Academic Program Coordinator, the Applied Research Coordinator, the Partnership Coordinator, Project auditor and the Financial Management Coordinator. These meet monthly and take decisions on the day to day administration of all the activities carried out under the Centre

The functions of the management Committee include:

- Planning and coordinating review meetings and activities of the ACE project;
- Managing the project administration, preparing reports & presentations; providing management information accordingly;
- Develop methodologies for planning and implementation of project activities;
- Tracking progress against project plan and allocated budget;
- Development of project concept notes and terms of reference for project activities;
- Development of project annual work plan for NUC, ACE, and collating of work and procurement plans of all the ACEs for submission to World Bank and Association of African Universities.
- Draw-up budget estimates for line activities in the Work Plan and other ACE activities;
- Participate in meetings to share perspective as well as work collaboratively to contribute to achieving the Project Management team's planned objectives and outcomes.

MEMBERS OF THE PUTOR MANAGEMENT COMMITTEE

Name	Designation
Daprim Ogaji	Centre Leader
Orish Orisakwe	Deputy Centre Leader
Onyewuchi Akaranta	ACE-IMPACT Coordinator
Kingsley Patrick-Iwuanyanwu	M&E Officer/Academic Programme Coordinator
Oluseye Babatunde	Applied Research Coordinator
Faith Diorgu	Partnership Coordinator
Best Ordinioha	Coordinator, Public Health

Catherine Ikewuchi	Coordinator, Nutritional Biochemistry/Toxicology
Anthonet Ezejiofor	Coordinator, Experimental Pharmacology/Toxicology
Josephine Gbobbo	Coordinator, Nursing/Midwifery
Nengi Isagua	Project Accountant
Anselem Umor	Project Auditor
William Wordi	Communication Officer
Henry Amadi	Procurement Officer
Confidence Igwe	Head of Admin/Desk Officer

The Centre Academic Board

The members include

1. Professor Benedict Nduka (Chairman)
2. The Deputy Centre Leader (Deputy Chairman)
3. Provost, College of Health Sciences
4. The Centre Leader
5. Dean, Faculty of Clinical Sciences
6. Dean, Faculty of Science
7. Dean, Faculty of Pharmaceutical Sciences
8. Director, Centre for Marine Pollution Monitoring and Seafood Safety
9. Chairman, Graduate Studies Committee, School of Public Health
10. Chairman, Graduate Studies Committee, Department of Nursing Science
11. Chairman, Graduate Studies Committee, Department of Biochemistry
12. Chairman, Graduate Studies Committee, Department of Experimental Pharmacology

Terms of reference of the Academic Board:

1. Coordinate and control the quality of postgraduate tuition in the Centre
2. Require regular attendance of students during lectures and other academic activities
3. Review application for postgraduate admission and make recommendation to the Centre and the host university's School of Graduate Studies.
4. Promote group and multi-disciplinary academic training programmes in the Centre
5. Carry out other functions assigned to it by the Centre's Board and School of Graduate Studies

Partners and internship locations

The centre has established relationships with the following organizations where students field visits and attachment would be done:

INDUSTRY/INSTITUTION
Nigerian Institutions
Industry
BOSKEL Nigeria Limited
African Biosciences Ltd
Nestle Nigeria Plc
International Breweries Ltd
Shell - Occupational Health Department
Shell - Community Health Department
Cadbury Nigeria Plc
DUFIL-PRIMA FOODS LIMITED
Shell - Department of Environment
Research Institutes

National Institute for Pharmaceutical Research & Development
Centre for Clinical Research (UPTH)
Institute of Maternal and Child Health (UNIPOINT)
Non-governmental Organisations
Hope and Care Foundation
Rhema Care Integrated Development Centre
Preventive and Public Health Consult
Youth PRO-FILE
World Health Organization
AFRICARE
FHI 360
United Nations Office on Drugs & Crime (UPTH Training Centre)
Nigerian academic institutions
University of Nigeria, Nsukka (Faculty of Pharmacy)
Nigeria Field Epidemiology and Laboratory Training Programme
University of Benin - Reproductive Health and Innovation
Hospitals
Rivers State Hospitals' Management Board
University of Port Harcourt Teaching Hospital
Rivers State University Teaching Hospital
Nigeria, Liquefied Natural Gas Company (Clinic)
RNZ Occupational Specialist Hospital
Nigeria National Petroleum Corporation (Clinic)
Chevron Nigeria Limited (Clinic)
Exxon Mobil Producing Unlimited (Clinic)
Government Agencies

National Agency for Food and Drug Administration and Control
Nigeria Center for Disease Control
Rivers State Ministry of Health
Rivers State Ministry of Environment
Bayelsa State Ministry of Health
Rivers State Primary Health Care Management Board
Rivers State Waste Management Agency
Federal Ministry of Health, Abuja
National Oil Spill Regulatory Agency
National Environmental Standards and Regulation Agency
National Primary Health Care Development Agency
Standards Organisation of Nigeria
Nigerian Meteorological Agency
National Population Commission
Councils and Associations
Nursing and Midwifery Council of Nigeria
Association of Public Health Physicians of Nigeria
Environmental Health Officers Registration Council of Nigeria
International Institutions
Universities
University of Ottawa - School of Nursing
Ensign College of Public Health
University of Sierra Leone
Durham University - Research Development Unit
University of South Australia - School of Nursing and Midwifery

Florida International University - Nicole Wertheim College of Nursing and Health Sciences
University of Toronto - Dalla Lana School of Public Health
State University of New York College at Cortland - Health Department,
University of Malawi - Public Health and Herbal Medicine

Academic staff associated with the centre

S/N	NAME	QUALIFICATIONS	DESIGN ATION	SPECIALISATION
	PUBLIC HEALTH			
1	Prof B. Ordinioha	MB, BS, FMCPH	Professor	History, Environmental Health
2	Prof O. Obunge	BSc, MD, PhD, FWACP	Professor	Microbiology/ Laboratory Practice
3	Prof O. Georgewill	B.Med Sc, MBBS, MSc, MD	Professor	Therapeutics
4	Prof Stephen Abah	MBBS, MSc, FWACP	Professor	Environmental Health
5	Prof Michael Asuzu	MB, BS, DOH&S; MSc; FMCPH; FFPHM	Professor	Clinical Epidemiology/Occupational Health
6	Prof Obehie Okojie	MBBS, FWACP, FMCPH	Professor	Occupational & Environmental Health
7	Prof Esther Isah	MB, BS, MSc, FMCPH	Professor	Occupational & Environmental Health
8	Prof Antonette Ofili	MBBS, MPH, FWACP, FMCPH	Professor	Occupational & Environmental Health
9	Prof Chima Onoka	MBBS, MSc, PhD, FWACP	Professor	Health Economics

S/N	NAME	QUALIFICATIONS	DESIGN ATION	SPECIALISATION
10	Prof Ben Wodi	PhD Public Health	Professor	Environmental Health
11	Prof Sanni Yaya	MSc Management; PhD Economics & Global Health	Professor	Global Health, Health Economics
12	Prof Ted Myers	PhD Health Promotion	Emeritus Professor	Health Promotion, Reproductive Health
13	Prof David Zakus	BSc Biochemistry. MSc Nutrition and Environmental Health; PhD Health Services Management	Professor	Health Services Management, Environmental Health
14	Dr Aaron Yarmoshuk	MSc Economics; PhD Global Health	Lecturer	Global Health, Sociology of Health, Research
15	Dr Alphonsus Isara	MBBS, MPH, FMCPH	Reader	Environmental/Occupational Health
16	Dr. Bolaji Babatunde	PhD	Senior lecturer	Radiation Toxicology
17	Dr. I. Chijioke- Nwauche	PhD	Senior lecturer	Environmental Health/Public Health

S/N	NAME	QUALIFICATIONS	DESIGN ATION	SPECIALISATION
18	Dr O.B. Babatunde	MBBS, Cert. Epid, FWACP	Senior lecturer	ICT/Research
19	Dr C.I. Tobin-West	MD, MPH, Adv Dip Mgt, FMCPH	Senior lecturer	Epidemiology, Reproductive Health
20	Dr K.E. Douglas	MBBS, DOccMed, FMCPH	Senior lecturer	Ethics, Occupational Health
21	Dr O. Maduka	MBBS, FMCPH, FRSPH	Senior lecturer	Principles and applied Epidemiology
22	Dr D.S. Ogaji	MBBS, MQI, PhD, MNIM, FMCPH	Senior lecturer	Health System
23	Dr I.D. Alabere	MBBS, MPH, FMCPH, MNI,	Senior lecturer	Health Management, Seminar
24	Dr F. Adeniji	MBCH.B, MSc, FWACP (community Health)	Senior lecturer	Biostatistics
25	Dr Enembe Okokon	MBcHb, MSc, PhD, FMCPH	Senior Lecturer	Environmental Epidemiology
26	Dr Oluyemi Olagoke Toyinbo	BSc, MSc, PhD	Visiting	Environmental Health/Toxicology

S/N	NAME	QUALIFICATIONS	DESIGN ATION	SPECIALISATION
27	Dr Jacob Atsu Mensah-Attipoe	BSc, MSc, PhD	Visiting	Environmental Health/Toxicology
	NUTRITIONAL BIOCHEMISTRY/TOXICOLOGY			
1	Prof. E.N. Onyeike	PhD	Professor	Nutritional Biochemistry/Toxicology
2	Prof. Akaninwor, J.O.	PhD	Professor	Nutritional Biochemistry
3	Prof. E.O. Orisakwe	PhD	Professor	Nutrigenomics & Toxicology
4	Prof. O.A.T. Ebuehi	PhD	Professor	Nutritional & Food Biochemistry & Nutrigenomics
5	Prof. Irene Ifeoma Ijeh	PhD	Professor	Nutritional Biochemistry /Toxicology
6	Prof. I. Imumorin	PhD	Professor	Molecular Nutrition/ Nutrigenomics
7	Dr. E.B. Essien	PhD	Senior Lecturer	Nutritional Biochemistry /Toxicology

S/N	NAME	QUALIFICATIONS	DESIGN ATION	SPECIALISATION
7	Dr. K.C Patrick-Iwuanyanwu, K.C	PhD	Senior lecturer	Nutritional Biochemistry/Toxicology
9	Dr. C.C Ikewuchi,	PhD	Senior lecturer	Nutritional Biochemistry/Toxicology
10	Dr. B.A. Amadi	PhD	Senior lecturer	Nutrition/Toxicology
	Dr. E. M. Ubiaru	PhD	Visiting	Industrial and Food Microbiology.
11	Dr. Chukwukeluo E.B. Chukwuogo	PhD	Visiting	Industrial
	ENVIRONMENTAL TOXICOLOGY			
1	Prof. Orish E. Orisakwe,	PhD	Professor	Toxicology/Pharmacology
2	Prof. Thuppil Venkatesh	PhD	Professor	Toxicology
3	Prof. Jerome Nriagu	PhD, DSc	Professor	Environmental Health Sciences
4	Prof. Judith T. Zelikoff,	Ph.D	Professor	Toxicology

S/N	NAME	QUALIFICATIONS	DESIGN ATION	SPECIALISATION
5	Prof. Chiara Frazzoli	PhD	Professor	Toxicology
6	Prof Abbas A. Mahdi	PhD	Professor	Toxicology
7	Prof. F. Sikoki	PhD	Professor	Eco-Toxicology
8	Prof. Leo Osuji	PhD	Professor	Eco-Toxicology
9	Prof Patrick U. Agbasi	PhD	Professor	Toxicology
10	Dr. Z. Igweze	PhD	Reader	Toxicology/Pharmacology
11	Dr. A.N, Ezejiofor	PhD	Senior lecturer	Toxicology/Pharmacokinetics
12	Dr. K.C. Patrick-Iwuanyanwu	PhD	Senior lecturer	Toxicology/ Risk Assessment
13	Dr. B, B, Babatunde,	PhD	Senior lecturer	Eco-Toxicity and Radiation Toxicology

Support Staff

Name	Designation
Confidence Igwe	Head of Admin/Desk Officer
Rossana Worlu	Students' support officer

Forms

Students' evaluation

Students are required to evaluate and provide electronic and confidential feedback on every module they have completed and later the entire programme at completion of their academic programme with the Centre. These evaluations are strictly for quality improvement purposes and must be filled online or using available paper forms which should be submitted by the course representative to the academic programme coordinator of the Centre at the end of the course

AFRICA CENTRE OF EXCELLENCE
CENTRE FOR PUBLIC HEALTH AND TOXICOLOGICAL
RESEARCH
UNIVERSITY OF PORT HARCOURT



ACE PUTOR
UNIPORT

Module evaluation

This form is strictly for quality improvement purposes and should be completed at the end of every module after the assessment

Basic Module Information

Please select module and instructor you want to evaluate.

Title of Course/Module _____

Evaluation of specific instructor

Characteristics	Rating 1 (poor) to 10 (excellent)		
Name of Instructor	Instruct 1	Instruct 2	Instruct 3
Expertise of the instructor			
Teaching skills of the instructor			
Teaching methods used			
Provide stimulation for further reading related to the module			
Overall teaching effectiveness			
Grade assessments (CA and exam)			

Learning Experience

Please indicate the extent to which you agree or disagree with each of the following statements. You can skip any question you are not able to answer.

Attributes	Rating 0 (very bad), 1 (bad), 2 (average), 3 (good), 4 (excellent)				
The aims of the module were clear	1	2	3	4	5
Students were encouraged to participate					

in discussions					
Students were encouraged to ask questions and were given meaningful answers					
Teaching staff were responsive to the learning needs of different students					
The teaching methods used were appropriate and helped me to learn					
Assessment and Feedback During the module, you received feedback on how well you are doing (e.g. from your peers, member(s) of academic staff) for your own learning. Feedback during the module can be provided in many ways and forms (e.g. question/answer session, electronic voting system, peer assessment, or group discussions) and does not necessarily need to be written feedback. At the same time, you (may have) received feedback on your assessments of learning (e.g. coursework, project, performance, report). Please indicate the extent to which you agree or disagree with each of the following statements. You can skip any question you are not able to answer					
Ways of accessing my work enabled me to show what I had learned					
The teaching staff gave me regular feedback about how well I was doing in the module					
I received useful feedback					
The teaching staff on this module motivated me to do my best work					
Module Resources Please indicate the extent to which you agree or disagree with each of the following statements. You can skip any question you are not able to answer					
Module materials were well organised and prepared					
The Virtual Learning Environment helped me with my learning					
The Physical Learning Environment helped me with my learning					
Learning Outcomes					

Please indicate the extent to which you agree or disagree with each of the following statements. You can skip any question you are not able to answer					
I found the module intellectually challenging and stimulating					
I have learned something that I consider valuable					
My interest in the subject has increased because of this module					
It was important for me to attend consistently and work hard					
The teaching staff treated me with consideration					
I felt as if the teaching staff cared about my individual learning in this module					
The module workload was consistent with other modules					
The module is effective for my future work					
The module was worth my time					
Lecturer(s)					
Please indicate the extent to which you agree or disagree with each of the following statements. You can skip any question you are not able to answer.					
I have received enough advice and support with my studies					
The lecturer(s) was enthusiastic about teaching his/her subject					
The lecturer(s) had a genuine interest in individual student learning					
The lecturer(s) was able to communicate clearly					
Overall Experience					
Please complete the following by clicking on the appropriate option.					
Overall this module was a good learning					

experience					

Comments

Please use this area if you want to leave the comments for Module and/or Instructor.

1. General Comments on the Module

2. General comments for the instructors

3. Lessons learnt during this module

S/N	Major at least three major things learnt during your participation in this module

Reflecting on the entire module

Q1 What do you consider were the five most important things (planned or unplanned) that you learnt during this module? Briefly described how they were learned

1.
2.
3.
4.

5.

Q2 Summarise the value that these lessons from the posting will add to your future career and organisation

Q3 What would you have done better if given another opportunity to repeat this module?

Submit

Thank you for your assessment!

AFRICA CENTRE OF EXCELLENCE
CENTRE FOR PUBLIC HEALTH AND TOXICOLOGICAL
RESEARCH
UNIVERSITY OF PORT HARCOURT



ACE PUTOR
UNIPORT

System evaluation

This form is strictly for quality improvement purposes and should be completed at the end of every module after the assessment

System					
Please complete the following by clicking on the appropriate option.					
Questions	Rating 0 (very bad), 1 (bad), 2 (average), 3 (good), 4 (excellent)				
How would you evaluate the registration process?	1	2	3	4	5
How would you rate the response time to your requests?					
Did we communicate promptly with you?					
Could you find all the information you need on the web site?					
Was it easy to make a payment?					
Was it easy to apply for a programme?					
Is the website informative?					
How would you rate the VLE (Virtual Learning Environment)?					
Is the module ICT platform easy to use?					
How would you rate the Physical Learning Environment)?					
Were the facilities/equipment easy to use?					
How would you rate the support provided					

by the students' enrolment officer?					
Is "My Page" useful?					

General Comments

Use this area to leave your comments regarding our system

Thank you for your assessment

Feedback on field attachment¹

To be completed by supervisors of students in attachment for field/practical learning.

Please tick the most appropriate response using the following keys

A – Agree

U – Uncertain

D – Disagree

N – Not applicable

	A	U	D	N
I had a chance to discuss with the programme coordinators or was given details about my role as supervisors of the students doing an attachment in my organization				
I find the trainee well prepared for the attachment (background information and expectations)				
I believe that the trainee had a chance to observe our typical work situation (cases, problems)				
I think that the trainee understands better the opportunities and constraints involved in our work.				
I think that the trainee made the optimal use of the opportunities for learning we offered him.				
I think that the trainee has made satisfactory progress and accomplished the aims of the attachment.				

Comments:

¹Adapted from Self-assessment for teachers of health workers, (1982), WHO, Geneva

If you disagree with any of the statements made above, please offer your reasons. Also, if you think that some aspects of the attachment were especially useful, we would like to know about them (please use extra page if there is not enough space below)

.....
.....

Other
suggestions.....
.....
.....

Would you recommend continuation of this scheme?
YES/NO/NOT SURE
Are you willing to help us again next year? YES/NO/NOT SURE

Absence form

Name:

Registration No:.....

Dates of absence:.....

Duration of absence.....

Reason(s) for absence.....

.....

Evidence(s) attached with application.....

.....

Course Member Signature: Date:.....

Instructor's Comment.....

.....

Date and signature.....

Centre Leader's Comment

Date and signature:



**AFRICA CENTRE OF EXCELLENCE FOR PUBLIC HEALTH
AND TOXICOLOGICAL RESEARCH
UNIVERSITY OF PORT HARCOURT
REPORT OF EXAMINATION MISCONDUCT**

NAME OF STUDENT/STAFF.....
STUDENT'S REGISTRATION MATRICULATION NUMBER....
STUDENT'S DEPARTMENT.....
COURSE NUMBER (if applicable).....
VENUE OF EXAMINATION (if applicable).....
LOCATION OF EXAMINATION
MISCONDUCT.....
DATE AND TIME OF EXAMINATION (if applicable).....
EXAMINATION OFFENCE (with evidence / statement if any).....
.....
.....
.....
.....
.....

CHIEF INVIGILATOR / INVIGILATOR'S SIGNATURE.....,,,...
WITNESS'S SIGNATURE (if
applicable).....
STUDENT'S COMMENT (if possible).....
.....
.....
.....
.....
.....

STUDENT'S SIGNATURE (if possible).....

AFRICA CENTRE OF EXCELLENCE
CENTRE FOR PUBLIC HEALTH AND
TOXICOLOGICAL RESEARCH
UNIVERSITY OF PORT HARCOURT



**ACE
 PUTOR ATTENDANCE DURING INVIGILATION OF
 UNIPORT EXAMINATION**

PROGRAMME: _____

COURSE TITLE: _____ **COURSE CODE:** _____

_____ **DATE:** _____

START TIME: _____ **STOPPAGE TIME:** _____

DURATION: _____

S/N	NAME	DESIGNATION	SIGNATURE

COURSE COORDINATOR SIGN:

Profiles of Centre's Administrators

Centre Leader



Dr Daprim Ogaji is the head of Department of Preventive and Social Medicine at the University of Port Harcourt and the Department of Community Medicine in the University of Port Harcourt Teaching Hospital. He graduated from the University of Port Harcourt and subsequently bagged - a Fellowship in Public Health from the National Postgraduate Medical College of Nigeria in 2006, master's in health quality improvement from the University of Helsinki and was later inducted into the Nigerian Institute of Management (Chartered). He is a Fellow of the International Society for Quality in Health Care and obtained a PhD in Medicine from the prestigious University of

Manchester. Daprim's teaching and research interests are focused on healthcare services research, quality improvement, improving access to healthcare, improving stakeholders' experiences, improving outcomes in the management of long-term conditions.

His methodological competences include quantitative research, evidence synthesis, health systems/programme evaluation, psychometrics and field trials. His professional competences span Health care, Public Health, Clinical Research, Medical Education, Health Management, Leadership, Health Policy, Quality Improvement, Global Health, Psychology, Qualitative Research, Applied Research, Community Health, Epidemiology, Primary Health Care, General Practice, Data Analysis, Health Promotion and Organisational Development

His involvement in the training of doctors, nurses and other allied health professionals over the years had resulted in the development of some taught postgraduate programmes in public health and the establishment of the World Bank funded African Centre of Excellence in Public Health and Toxicological Research in the University of Port Harcourt. Email: daprim.ogaji@uniport.edu.ng

Deputy Centre Leader

Prof Orish Ebere Orisakwe holds a PhD in Pharmacology & Toxicology of the University of Nigeria, Nsukka and his postdoctoral training in Health Canada. Author of over 250 publications, is the first Nigerian, European Registered Toxicologist ERT and the first African, Fellow of Academy of Toxicological Sciences ATS, USA. In 2017 alone, he had 17 articles cited in PUBMED. First African Speaker, Global Summit on Regulatory Science – Emerging Technologies for Food and Drug Safety (GSRS17), Brasilia, Brazil, September 18-20, 2017. He was coordinator of the African Society of Toxicological Sciences in Nigeria and presently one of the foundation mentors/President of West Africa Society of Toxicology and an

advisor of the Cameroon Society of Toxicological Sciences. He has served as a Visiting Professor to some universities in both Europe and the USA including developing programs in Global Health. Orish serves in the Editorial and Review boards of many PUBMED cited journals in USA and Europe. He is cited in many "who is who" and several biographical reference listings in Environmental Toxicology, Public health and Risk Assessment. He is a scientific expert of the Joint FAO/WHO Committee on Food Additives, scientific expert for the World Health Organization WHO guideline development group – nutrition actions. He is a scientific

expert/consultant, Review of EFSA-FAO-WHO Developing a technical Guidance for Total Diet Study in Developing countries and consultant to International Council for Science (ICSU). Prof Orish is the first African to win the SOT Global Senior Scholar Exchange Program Award and a Visiting Scientist in US FDA. In 2012, with the help of his collaborators from both Europe and North America, he mounted the first MSc/PhD Toxicology program (University of Port Harcourt) as a stand-alone discipline in Africa. Orish has mentored many African Toxicologists. At the moment he serves a Visiting Scientist to US FDA where his current research is on the epigenetics of low dose metal mixture and non-alcoholic fatty liver disease NAFLD. Email: orish.orisakwe@uniport.edu.ng

Centre's Consultant



Professor Onyewuchi Akaranta is currently the Director, Science Institute and former Director, Centre for Research Management, (2010-2015), Exchange and Linkage Programmes Unit (2006 – 2010) at the University of Port Harcourt. He has held many academic and administrative positions at the University including Head of the department of Pure and Industrial Chemistry (1999 – 2001) and several committees in the University. He has also served as external examiner to a number of Nigerian Universities.

Professor Akaranta is a fellow of Polymer Institute of Nigeria (PIN), a member of the Chemical Society of Nigeria (CSN), and Oil and Colour Chemists Association (OCCA) of United Kingdom. He is a member of West African Research and Innovation Management Association (WARIMA). He is listed in the Marquis Who is Who in Science and Engineering in 2003, 7th Edition. He obtained a B.Sc (2nd Class Upper Division) degree in Chemistry in 1978 from the University of Nigeria, Nsukka, M.Sc in Polymer Science and Technology in 1982 from Ahmadu Bello University, Zaria, and a Ph.D degree in Industrial Chemistry in 1995 from the University of Port Harcourt, Port Harcourt.

Professor Akaranta has extensive experience in Agro-Wastes Utilization Value Addition. In 2007, he delivered an inaugural lecture titled, “Agro-Wastes Utilization: The Chemist’s Input”. For over thirty-five (35) years he has been conducting research on Conversion of Agro-Wastes to Industrial Raw Materials. Such raw materials have been used in the production of Adhesives, Ion Exchange Resins, Oilfield Chemicals, Paints and Paint Additives. He was the Project Manager, UniPort-World Bank STEP-B Project (2008 – 2013). He has published over 100 articles in reputable journals and authored several academic monographs. Email: onyewuchi.akaranta@uniport.edu.ng



Monitoring and Evaluation (M&E) officer/Academic Programme Coordinator

Dr. Kingsley Chukwuemeka Patrick-Iwuanyanwu is a Senior Lecturer in the Department of Biochemistry. He holds a PhD degree in Nutritional Biochemistry/Toxicology of the University of Port Harcourt, Nigeria. He is a scholar of the prestigious Harvard School of Public Health, Boston, USA in Analyzing risk: Principles, concepts and applications. Dr. Patrick-Iwuanyanwu is a recipient of The World Academy of Science- International Centre for Chemical and Biological Sciences (TWAS-ICCBS) Postgraduate fellowship award in 2009 to University of Karachi, Pakistan; He was among the 100 young scientists from around the world selected to

attend The World Life Sciences Forum by BioVision (Lyon, France); He is a recipient of Society of Toxicology (SOT) /AstraZeneca IUTOX fellowship award in 2009; He is a member of the class of 2010 BioVision Alexandria.Nxt fellows in **Alexandria, Egypt**. He served as a pioneer African representative and one of the founding Executive Members of Student Advisory Council (SAC) of Society of Environmental Toxicology and Chemistry (**SETAC, EUROPE**) from **2009-2011**. He was also a pioneer member of the Scientific Organizing Committee of the **SETAC EUROPE**-sponsored 1st Young Environmental Scientists (**YES**) meeting at the **University of Landau, Germany**.

Dr. Patrick-Iwuanyanwu is an author of several cited publications in peer-reviewed journals with research interests in the areas of Hepatotoxicity, Food safety, Risk assessments of toxicants and environmental pollutants in the food chain, Environmental Impact Assessment (EIA) surveys, Risk Assessment of hydrocarbon contamination and water soluble fraction of petroleum products, Evaluation of inhalation exposure of pollutants in the Environment using rat models, Reproductive toxicology, Exposure to contaminants and toxicological response of organisms at multiple tiers of biological organization (using experimental animal models) with a view to monitoring the source, fate, transport, and toxicity of contaminants. Dr. Patrick-Iwuanyanwu is a member of several professional bodies including Nigerian Society of Biochemistry and Molecular Biology (NSBMB); Africa Education Initiative (NEF, CT. USA); West African Society of Toxicology (WASOT); Society of Environmental Toxicology and Chemistry (SETAC, Europe); Society of Toxicology (SOT, Reston, USA); Society for Experimental Biology (SEB, UK). At the moment he is the Secretary General of West African Society of Toxicology (WASOT) and also serves as the Monitoring and evaluation (M&E) officer/ Academic programme coordinator of World Bank African Center of Excellence for Public Health and Toxicological Research (ACE-PUTOR), University of Port Harcourt. He is a mentor to many young early career toxicologists. E-mail: kc.patrick-iwuanyanwu@uniport.edu.ng;

kc.patrick-iwuanyanwu@aceputoruniport@uniport.edu.ng



Partnership coordinator

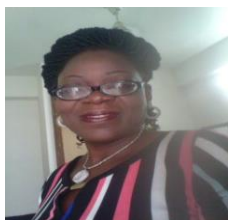
Faith has a broad background in psychology, maternal and child health with specific training and expertise in phenomenology and survey research designs and thematic data analysis in qualitative studies. Faith have a vast amount of nursing and midwifery clinical/teaching experiences. Her wide remit of interests led her to undertake a second masters and PhD degrees in midwifery in the United Kingdom. Her important work is in the area of evidence-based practice in childbirth in Nigeria and Africa as vital in the promotion of women's autonomy and well-being during the birthing process. Her Ph.D study is titled "Perceptions and experiences of mothers, midwives, and obstetricians concerning birthing position and perineal trauma: A mixed methods study based in Nigeria", has led to excellent collaborative work undertaken in Port Harcourt, Nigeria. This collaborative work led to an on-going project "The making Normal Birth a Reality in Port Harcourt, Nigeria", which involves educating and training mothers, midwives, obstetricians and the community at large to implement evidence based normal birth practices which will enable women to birth in upright position to promote better health outcomes and reduce rates of perineal injuries. This led to her invention of a birthing chair to support women birth in various upright positions. She is also engaged in other collaborative studies with international counterparts as PI or co-investigator in Canada, UK, and Australia. Based on these previous experiences, She understands the importance of team work among project members and of building a realistic

research plan, timeline, and budget to meet the target. Faith is *Nigeria's first doctorate in midwifery awarded by University of Chester UK and was awarded the Alumni Laureate award of the University of Nottingham, UK in 2018.* Email: faith.diorgu@uniport.edu.ng



DR. OLUSEYE BOLARINWA BABATUNDE MBBS (Ilorin), PgCertEpid (Liverpool), MPH (Liverpool), FWACP, FRSP is a Public Health Physician and Infectious Disease & Clinical Epidemiologist with two decades of experience in the design and evaluation of public health interventions in Nigeria, and the Niger Delta in particular. He is a Senior Lecturer in Epidemiology and Medical Statistics in the University of Port Harcourt, and Honorary Consultant in Community Medicine at the University of Port Harcourt Teaching Hospital, Port Harcourt. Recently, he served as a National Professional Officer (Malaria) at the World Health Organization (on Secondment from UNIPORT); and he is the current Acting Director, Centre for Health and Development at the University of Port Harcourt.

Coordinator, Experimental Pharmacology/Toxicology



Dr Anthonet Ndidiamaka Ezejiofor holds PhD in Pharmacology and Toxicology from Abia State University, Uturu, Abia State, Nigeria. Author of over 60 publications, an award winner of 2012 Outstanding Women in Science-Third World Organization of Women in Science (TWOWS). A registered member of many international organizations including Society of Toxicology (SOT), African Society of Toxicological Sciences in Nigeria and West Africa Society of Toxicology (WASOT). Research Fellow of The World Academy of Science (TWAS), 2017/2018. Dr Anthonet serves in the Editorial and Review boards of many journals in USA and Europe. Email: ndidiezejiofor@yahoo.com, anthonet.ezejiofor@uniport.edu.ng



Coordinator, Nutritional Biochemistry/toxicology

Ikewuchi, Catherine Chidinma is currently a Senior Lecturer in the Department of Biochemistry. She obtained her Ph.D in Nutritional Biochemistry/Toxicology from the University Port Harcourt. Her PhD work focused on the use of two plants in the management of some metabolic diseases such as diabetes mellitus, hypertension, hyperlipidaemia etc. Catherine is involved in the teaching and research activities at the Department of Biochemistry. She has extensive experience in teaching and research in the areas of Plant and Soil Biochemistry, Environmental Biochemistry, Nutritional Biochemistry and Toxicology and Industrial Biochemistry. Her research interest is in the investigation of the chemical compositions and toxicological/pharmacological profiles of nutritional and medicinal plants, and mushrooms as well as the management of non-communicable diseases (NCD) and metabolic disorders with our indigenous foods and vegetables. She has over 70 publications in peer- reviewed journals. She is an active member of the Society of Biochemists and Molecular Biologists of Nigeria (SBMBN). Email: catherine.ikewuchi@uniport.edu.ng

Coordinator, Public Health



Prof. Best Ordinioha is a Public Health Physician and Professor of Preventive and Social Medicine/Environmental Health at the Department of Preventive and Social Medicine, College of Health Sciences, University of Port Harcourt, Nigeria. He is also an honorary Consultant Community Physician at the University of Port Harcourt Teaching Hospital. He is a Fellow of the National Postgraduate Medical College, Faculty of Public Health and has research and specialty interest in Environmental Health and Public Health Nutrition.

Applied Research Coordinator



Internal Auditor

Aselemi Godpower Umor is a Principal Internal Auditor with the Internal Audit Department of the University of Port Harcourt with Membership of the Institute of Chartered Accountants of Nigeria (ICAN), a master's degree (UK) in Oil and Gas Accounting—with Distinction and a bachelor's degree in Accounting (Second Class upper). He has acquired years of experience with identifying potential risk areas in the course of audits and investigations; making sure controls are properly designed, implemented and operationally effective to mitigate risks. Email: aselbest@gmail.com

Project Accountant



Nengi M. Isagua is a Chief Accountant in the Bursary Department of the University of Port Harcourt. She is a member of the Institute of Chartered Accountants of Nigeria (ICAN) and the Chartered Institute of Taxation of Nigeria (CITN). With a master's degree and currently a doctoral student in the University of Port Harcourt, Nengi has vast audit experience from the public and private sectors. She is saddled with the responsibility of preparing annual budgets, quarterly, half- yearly and yearly budget performance reports of the University, ensuring compliance in expenditure control for all payments in the University. Her areas of interest in research have been in 'financing of higher institutions in Nigeria, both in budgetary and Internally Generated Revenue in Universities. She has undergone several trainings including training on International Public Sector Accounting Standards (IPSAS) and attended various Accounting conferences. E-mail: nengi.isagua@uniport.edu.ng